



**MERCEDES C: 1HXJ257**

Vinnnumber:	<b>WDD2050361F110875</b>	Versionname:	<b>C BER 180 BlueTEC 116PK</b>
First Registrationdate:	<b>21/10/2014</b>	Fiscalpower:	
Expertise Mileage:	<b>149750</b>	Power Kw:	<b>85</b>
Bodytype:		Body color:	<b>Black</b>
Gearbox:	<b>MAN 6 VIT</b>	Paint type:	<b>Metalic</b>
Transmission:	<b>Back</b>	Rims summer:	<b>Aluminium</b>
Fueltype:	<b>Diesel</b>	Oil level:	<b>OK</b>
Maintenance:	<b>OK</b>	Parking lot:	<b>4324</b>
Maintenance:	<b>A1 IN 331 DAGEN</b>		
Battery functioning:	<b>Yes</b>		
Number of doors:	<b>4</b>		
Number of seats:	<b>5</b>		
Number head rests:	<b>5</b>		
Rims summer:	<b>Aluminium</b>		
Category:	<b>Passenger Car</b>		
Oil level:	<b>OK</b>		
Registration Certificate Car (BE):	<b>Yes</b>		

**Options**

Radio CD		Central consol F	
GPS storage		Luggage cover	
GPS storage	<b>SD</b>	Front parking sensors	
Windows electric F		Rear parking sensors	
Windows electric R		Type of Tow bar	<b>No Tow bar</b>
Cruise Control			
Steering wheel multifunctional			
Type of headlighting	<b>Headlighting Halogen</b>		
Type of GPS	<b>GPS big screen color</b>		
Type of Lining	<b>Lining leather</b>		
Type of climate control	<b>Autom climate control</b>		

**Limited Technical Inspection**

Airco functioning	<b>OK</b>	Battery functioning	<b>Yes</b>
Tires wear profile	<b>OK</b>	Power steering	<b>Yes</b>
Idle position	<b>OK</b>	Sound engine	<b>OK</b>
Engine startingtime	<b>OK</b>	Clutch test	<b>OK</b>
Exhaust gass	<b>OK</b>	Wiper fluid level	<b>OK</b>
Handbrake	<b>OK</b>	Transmission	<b>OK</b>
		Lighting	<b>OK</b>
		Wiperblades	<b>OK</b>

**Degree of wear**

	<b>205/60/16/92 V LightMetal</b>			
Summer tyres:	Fr.L.	<b>Bridgestone: 5 mm</b>	Fr.R.	<b>Bridgestone: 5 mm</b>
	Re.L.	<b>Michelin: 5 mm</b>	Re.R.	<b>Michelin: 5 mm</b>

**Assistance equipment**

Repair kit	<b>Yes</b>	Compressor	<b>Yes</b>
------------	------------	------------	------------

Total cost ex VAT	<b>306,80</b>
-------------------	---------------

Alloy rim F R, Scratch(es), Acceptable	<b>0,00</b>
--	-------------

*No pictures to display*

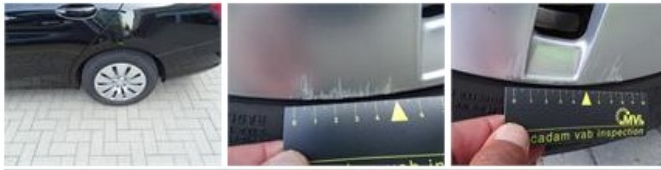
Front bumper, Scratch(es), LI - Repair and paint (complete)	<b>211,80</b>
---	---------------



Door R R, Bad repair, Paint	<b>0,00</b>
-----------------------------	-------------



Alloy rim R L, Scratch(es), LI - Repair and paint (complete) 95,00



Seat cover R L, Stain, Acceptable 0,00

