


OPEL Zafira: DH9127

Vinnnumber:	WOLPD9E39E2075008	Versionname:	ZAFIRA TOURER ecoFLEX
First Registrationdate:	19/06/2014	Fiscalpower:	Enjoy St/St 136PK
Expertise Mileage:	127119	Power Kw:	100
Bodytype:	MPV	Body color:	Grey
Gearbox:	MAN 6 VIT	Paint type:	Metalic
Transmission:	Front	Rims summer:	Steel
Fueltype:	Diesel	Oil level:	OK
Maintenance:	NOT OK	Parking lot:	3508
Battery functioning:	Yes		
Number of doors:	5		
Number of seats:	5		
Number head rests:	5		
Rims summer:	Steel		
Category:	Passenger Car		
Oil level:	OK		
Registration Certificate Car (BE):	Yes		

Options

Radio CD		Central consol F	
GPS storage		Luggage cover	
GPS storage	HD	Front parking sensors	
Windows electric F		Rear parking sensors	
Cruise Control		Type of Tow bar	No Tow bar
Steering wheel multifunctional			
Radio multimedia			
Type of headlighting	Headlighting Halogen		
Type of GPS	GPS big screen color		
Type of Lining	Lining fabrics		
Type of climate control	Manual climate control		

Limited Technical Inspection

Airco functioning	OK	Battery functioning	Yes
Tires wear profile	OK	Power steering	Yes
Idle position	OK	Sound engine	OK
Engine startingtime	OK	Clutch test	OK
Exhaust gass	OK	Wiper fluid level	OK
Handbrake	OK	Transmission	OK
		Lighting	OK
		Wiperblades	OK

Degree of wear

	215/60/16/95 H Steel			
Summer tyres:	Fr.L.	Michelin: 2 mm	Fr.R.	Michelin: 2 mm
	Re.L.	Michelin: 4 mm	Re.R.	Michelin: 4 mm

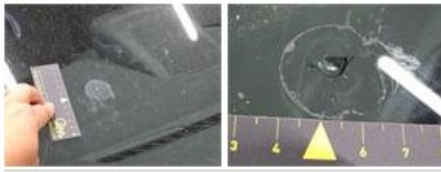
Assistance equipment

Emergency spare wheel	Yes	Jack	Yes
-----------------------	------------	------	------------

 Total cost ex VAT 620,00

 Bumper grille F R, Broken, E - Replace 109,00

 Windscreen, Stone chip(s), Windscreen repair 58,80



Bumper F R, Scratch(es), Acceptable	0,00
<i>No pictures to display</i>	
Maintenance, Maintenance, Execute	0,00



Door R R, Scratch(es), Acceptable	0,00
<i>No pictures to display</i>	
Wheel cover R R, Scratch(es), Acceptable	0,00
<i>No pictures to display</i>	
Bumper corner R R, Scratch(es), Acceptable	0,00
<i>No pictures to display</i>	
Door F L, Bump(s), Acceptable	0,00
<i>No pictures to display</i>	
Internal Boot Lining R, Scratch(es), Acceptable	0,00
<i>No pictures to display</i>	
Wing R R, Bump(s) and scratch(es), LI - Repair and paint (complete)	452,20

