



**RENAULT CLIO: 1LRX236**

Vinnumber:	<b>VF15R0J0A53968401</b>	Versionname:	<b>1.5 ENERGY DCI 90E EXPRESSION</b>
First Registrationdate:	<b>18/11/2015</b>	Fiscalpower:	
Expertise Mileage:	<b>53392</b>	Power Kw:	<b>66</b>
Bodytype:	<b>Hatchback</b>	Body color:	<b>Silver</b>
Gearbox:	<b>MAN 6 VIT</b>	Paint type:	<b>Metalic</b>
Transmission:	<b>Front</b>	Rims summer:	<b>Steel</b>
Fueltype:	<b>Diesel</b>	Oil level:	<b>OK</b>
Battery functioning:	<b>Yes</b>	Parking lot:	<b>4227</b>
Number of doors:	<b>5</b>		
Number of seats:	<b>5</b>		
Number head rests:	<b>5</b>		
Rims summer:	<b>Steel</b>		
Category:	<b>Passenger Car</b>		
Oil level:	<b>OK</b>		
Registration Certificate Car (BE):	<b>Yes</b>		

**Options**

GPS storage	<b>HD</b>	Luggage cover
GPS storage		Rear parking sensors
Windows electric F		
Cruise Control		
Steering wheel multifunctional		
Type of headlighting	<b>Headlighting Halogen</b>	
Type of GPS	<b>GPS big screen color</b>	
Type of Lining	<b>Lining fabrics</b>	
Type of climate control	<b>Manual climate control</b>	

**Limited Technical Inspection**

Airco functioning	<b>OK</b>	Battery functioning	<b>Yes</b>
Tires wear profile	<b>OK</b>	Power steering	<b>Yes</b>
Idle position	<b>OK</b>	Sound engine	<b>OK</b>
Engine startingtime	<b>OK</b>	Clutch test	<b>OK</b>
Exhaust gass	<b>OK</b>	Wiper fluid level	<b>OK</b>
Handbrake	<b>OK</b>	Transmission	<b>OK</b>
		Lighting	<b>OK</b>
		Wiperblades	<b>OK</b>

**Degree of wear**

	<b>185/65/15/92 V Steel</b>			
Summer tyres:	Fr.L.	<b>Michelin: 3 mm</b>	Fr.R.	<b>Michelin: 3 mm</b>
	Re.L.	<b>Michelin: 4 mm</b>	Re.R.	<b>Michelin: 4 mm</b>

**Assistance equipment**

Repair kit	<b>Yes</b>	Compressor	<b>Yes</b>
------------	------------	------------	------------

Total cost ex VAT	<b>821,38</b>
-------------------	---------------

Wheel cover F R, Missing, E - Replace	<b>24,00</b>
---------------------------------------	--------------



Wheel cover R R, Scratch(es), E - Replace	<b>24,00</b>
---	--------------

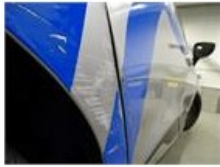




Bumper R, Scratch(es), Acceptable 0,00

No pictures to display

Wing R R, Bump(s) and scratch(es), LI - Repair and paint (complete) 294,56



Wing R L, Scratch(es), Acceptable 0,00

No pictures to display

Wheel cover R L, Scratch(es), E - Replace 24,00



Wing F L, Scratch(es), LI - Repair and paint (complete) 176,14



Front bumper, Scratch(es), Acceptable 0,00

No pictures to display

Interior, Dirty, Acceptable 0,00

No pictures to display

Door R R, Scratch(es), LI - Repair and paint (complete) 254,68



Wheel cover F L, Scratch(es), E - Replace 24,00





Headlight L, Scratch(es), Acceptable	0,00
<i>No pictures to display</i>	
Bodywork, Not original part, Remove lettering	0,00
<i>No pictures to display</i>	