



MERCEDES A: 1JLR517

| | | | |
|------------------------------------|--------------------------|--------------|----------------------------------|
| Vinnumber: | WDD1760121V048705 | Versionname: | A 180CDI BE Edition 109PK |
| First Registrationdate: | 19/01/2015 | Fiscalpower: | |
| Expertise Mileage: | 112461 | Power Kw: | 80 |
| Bodytype: | | Body color: | Silver |
| Gearbox: | MAN 6 VIT | Paint type: | Metalic |
| Transmission: | Front | Rims summer: | Steel |
| Fueltype: | Diesel | Oil level: | OK |
| Maintenance: | OK | Parking lot: | 4615 |
| Battery functioning: | Yes | | |
| Number of doors: | 5 | | |
| Number of seats: | 5 | | |
| Number head rests: | 5 | | |
| Rims summer: | Steel | | |
| Category: | Passenger Car | | |
| Oil level: | OK | | |
| Registration Certificate Car (BE): | Yes | | |

Options

| | | | |
|--------------------------------|-------------------------------|-----------------------|-------------------|
| Radio CD | | Central consol F | |
| GPS storage | HD | Luggage cover | |
| GPS storage | | Front parking sensors | |
| Windows electric F | | Rear parking sensors | |
| Windows electric R | | Type of Tow bar | No Tow bar |
| Steering wheel multifunctional | | | |
| Type of headlighting | Headlighting Halogen | | |
| Type of GPS | GPS big screen color | | |
| Type of Lining | Lining fabrics | | |
| Type of climate control | Manual climate control | | |

Limited Technical Inspection

| | | | |
|---------------------|-----------|---------------------|------------|
| Airco functioning | OK | Battery functioning | Yes |
| Tires wear profile | OK | Power steering | Yes |
| Idle position | OK | Sound engine | OK |
| Engine startingtime | OK | Clutch test | OK |
| Exhaust gass | OK | Wiper fluid level | OK |
| Handbrake | OK | Transmission | OK |
| | | Lighting | OK |
| | | Wiperblades | OK |

Degree of wear

| | | | | |
|---------------|-----------------------------|---------------------|-------|---------------------|
| | 195/65/15/91 T Steel | | | |
| Summer tyres: | Fr.L. | Dunlop: 5 mm | Fr.R. | Dunlop: 5 mm |
| | Re.L. | Dunlop: 7 mm | Re.R. | Dunlop: 7 mm |

Assistance equipment

| | | | |
|------------|------------|------------|------------|
| Repair kit | Yes | Compressor | Yes |
|------------|------------|------------|------------|

Total cost ex VAT 845,80

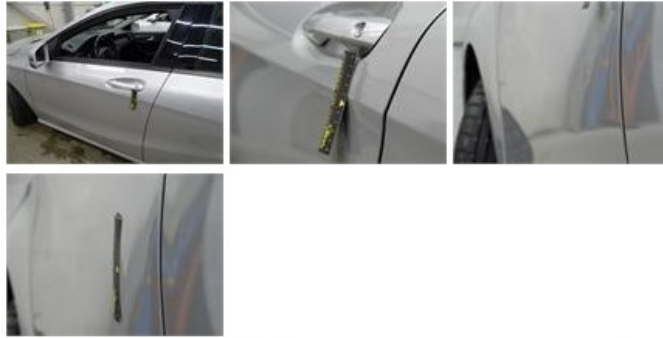
Wheel cover R R, Scratch(es), E - Replace 30,00



Wheel cover F R, Scratch(es), Acceptable 0,00

No pictures to display

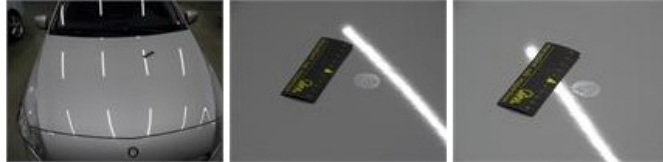
Door F L, Bump(s), PDR - Knock out without painting 82,80



Bumper R, Scratch(es), Acceptable 0,00

No pictures to display

Bonnet, Chemical polution, LI - Repair and paint (complete) 290,08



Front bumper, Scratch(es), LI - Repair and paint (complete) 211,80



Sill outer L, Scratch(es), It - Spot repair 115,56



Sill outer R, Deformed, P - Check 0,00



Rear window, Scratch(es), Acceptable 0,00

No pictures to display

Rear spoiler, Scratch(es), LI - Repair and paint (complete) 115,56

