



MERCEDES E: 1FIQ667			
Vinnumber:	<b>WDD2120051A839720</b>	Versionname:	<b>E BER 200CDI BE 136PK</b>
First Registrationdate:	<b>9/07/2013</b>	Fiscalpower:	
Expertise Mileage:	<b>116549</b>	Power Kw:	<b>100</b>
Bodytype:		Body color:	<b>Grey</b>
Gearbox:	<b>Automatic</b>	Paint type:	<b>Metalic</b>
Transmission:	<b>Back</b>	Rims summer:	<b>Aluminium</b>
Fueltype:	<b>Diesel</b>	Oil level:	<b>OK</b>
Battery functioning:	<b>Yes</b>	Parking lot:	<b>1432</b>
Number of doors:	<b>4</b>		
Number of seats:	<b>5</b>		
Number head rests:	<b>5</b>		
Rims summer:	<b>Aluminium</b>		
Category:	<b>Passenger Car</b>		
Oil level:	<b>OK</b>		
Registration Certificate Car (BE):	<b>Yes</b>		

Options	
Radio CD	Central consol F
GPS storage	HD Front parking sensors
GPS storage	Rear parking sensors
Windows electric F	
Windows electric R	
Cruise Control	
Steering wheel multifunction	
Alarm	
Radio multimedia	
Type of headlighting	<b>Headlighting Halogen</b>
Type of GPS	<b>GPS big screen color</b>
Type of Lining	<b>Lining leather</b>
Type of climate control	<b>Autom climate control</b>

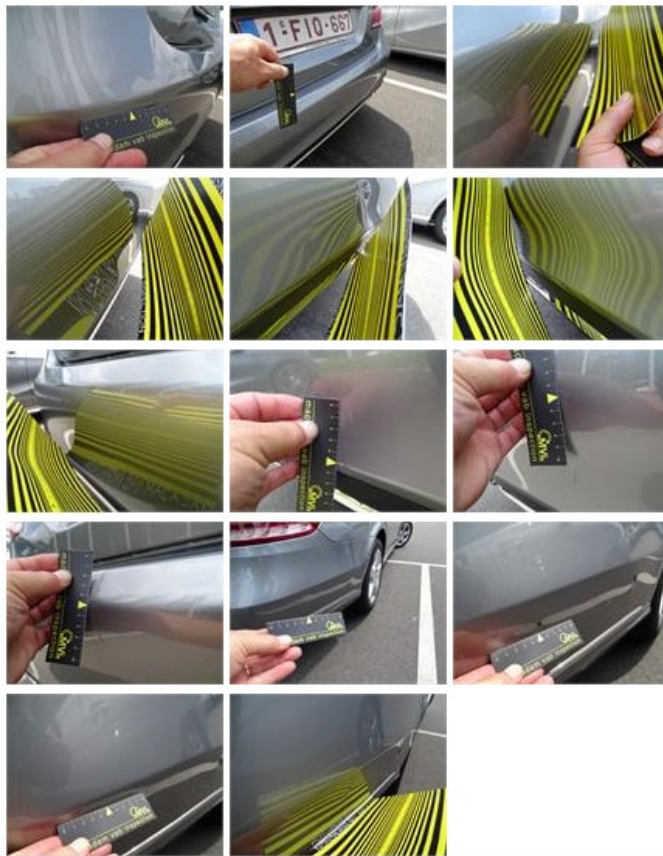
Limited Technical Inspection			
Airco functioning	<b>OK</b>	Battery functioning	<b>Yes</b>
Tires wear profile	<b>OK</b>	Power steering	<b>Yes</b>
Idle position	<b>OK</b>	Sound engine	<b>OK</b>
Engine startingtime	<b>OK</b>	Clutch test	<b>OK</b>
Exhaust gass	<b>OK</b>	Wiper fluid level	<b>OK</b>
Handbrake	<b>OK</b>	Transmission	<b>OK</b>
		Lighting	<b>OK</b>
		Wiperblades	<b>OK</b>

Degree of wear				
	<b>245/45/17/95 W LightMetal</b>			
Summer tyres:	Fr.L.	<b>Bridgestone: 4 mm</b>	Fr.R.	<b>Bridgestone: 4 mm</b>
	Re.L.	<b>Pirelli: 4 mm</b>	Re.R.	<b>Pirelli: 4 mm</b>

Assistance equipment			
Emergency spare wheel	<b>Yes</b>	Jack	<b>Yes</b>

Total cost ex VAT	349,16
Bumper R, Bump(s) and scratch(es), LI - Repair and paint (complete)	254,16





Rocker panel inner R L, Scratch(es), Acceptable	0,00
<i>No pictures to display</i>	
Door F L, Bump(s), Acceptable	0,00
<i>No pictures to display</i>	
Front bumper, Scratch(es), Acceptable	0,00
<i>No pictures to display</i>	
Roof, Bump(s), Acceptable	0,00
<i>No pictures to display</i>	
Door F R, Scratch(es), Acceptable	0,00
<i>No pictures to display</i>	
Wing R L, Bump(s), Acceptable	0,00
<i>No pictures to display</i>	
Alloy rim F L, Scratch(es), Acceptable	0,00



Windscreen, Stone chip(s), Acceptable	0,00
<i>No pictures to display</i>	
Alloy rim R L, Scratch(es), LI - Repair and paint (complete)	95,00
<i>No pictures to display</i>	
Door R R, Scratch(es), Acceptable	0,00
<i>No pictures to display</i>	
Door R R, Bump(s), Acceptable	0,00
<i>No pictures to display</i>	
Alloy rim R R, Scratch(es), Acceptable	0,00
<i>No pictures to display</i>	
Bonnet, Bump(s), Acceptable	0,00
<i>No pictures to display</i>	
Rocker panel inner R R, Scratch(es), Acceptable	0,00
<i>No pictures to display</i>	

Alloy rim F R, Scratch(es), Acceptable	0,00
<i>No pictures to display</i>	
Wing R R, Scratch(es), Acceptable	0,00
<i>No pictures to display</i>	
Wing R L, Scratch(es), Acceptable	0,00
<i>No pictures to display</i>	