


OPEL Zafira: 1HFL603

Vinnnumber:	WOLPD9E32E2084987	Versionname:	ZAFIRA TOURER ecoFLEX Business 136PK
First Registrationdate:	8/07/2014	Fiscalpower:	
Expertise Mileage:	89693	Power Kw:	100
Bodytype:		Body color:	Grey
Gearbox:	MAN 6 VIT	Paint type:	Metalic
Transmission:	Front	Rims summer:	Steel
Fueltype:	Diesel	Oil level:	OK
Maintenance:	OK	Parking lot:	1307
Battery functioning:	Yes		
Number of doors:	5		
Number of seats:	5		
Number head rests:	5		
Rims summer:	Steel		
Category:	Passenger Car		
Oil level:	OK		
Registration Certificate Car (BE):	Yes		

Options

Radio CD		Central consol F	
GPS storage	HD	Luggage cover	
GPS storage		Front parking sensors	
Windows electric F		Rear parking sensors	
Windows electric R		Type of Tow bar	No Tow bar
Cruise Control			
Steering wheel multifunctional			
Type of headlighting	Headlighting Halogen		
Type of GPS	GPS big screen color		
Type of Lining	Lining fabrics		
Type of climate control	Manual climate control		

Limited Technical Inspection

Airco functioning	OK	Battery functioning	Yes
Tires wear profile	OK	Power steering	Yes
Idle position	OK	Sound engine	OK
Engine startingtime	OK	Clutch test	OK
Exhaust gass	OK	Wiper fluid level	OK
Handbrake	OK	Transmission	OK
		Lighting	OK
		Wiperblades	OK

Degree of wear

	215/60/16/95 H Steel			
Summer tyres:	Fr.L.	Michelin: 5 mm	Fr.R.	Michelin: 5 mm
	Re.L.	Michelin: 5 mm	Re.R.	Michelin: 5 mm

Assistance equipment

Emergency spare wheel	Yes	Jack	Yes
-----------------------	------------	------	------------

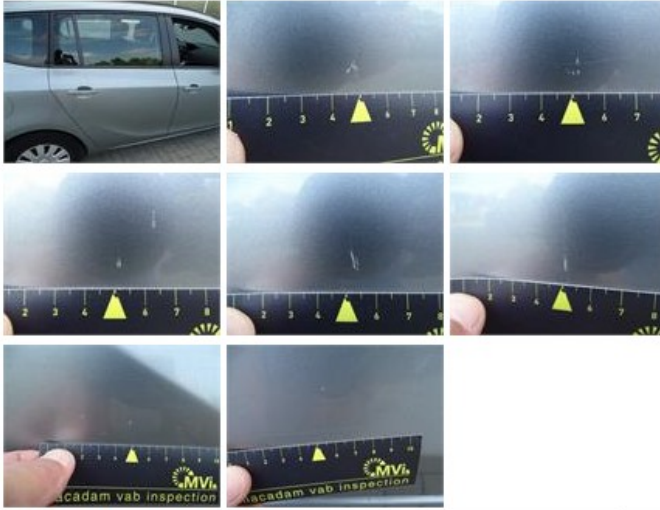
 Total cost ex VAT 1754,74

 Tailgate, Scratch(es), LI - Repair and paint (complete) 301,68


Door F L, Bump(s), PDR - Knock out without painting 82,80



Door R R, Scratch(es), LI - Repair and paint (complete) 318,35



Wing R R, Scratch(es), Acceptable 0,00

No pictures to display

Wing R L, Scratch(es), LI - Repair and paint (complete) 308,20



Bonnet, Scratch(es), Acceptable 0,00

No pictures to display

Luggage space cover, Strained , Repair/replace (lump sum) 0,00



Door R L, Scratch(es), LI - Repair and paint (complete) 318,35



Wheel cover F R, Scratch(es), Acceptable 0,00

No pictures to display

Wheel cover F L, Scratch(es), Acceptable 0,00

No pictures to display

Rearview mirror housing R, Scratch(es), LI - Repair and paint (complete) 115,56



Door F R, Bump(s), PDR - Knock out without painting 63,00



Bumper R, Scratch(es), LI - Repair and paint (complete)

211,80



Engine protective plate, Hole, E - Replace

35,00

