



VOLVO V60: 1HHP963

Vinnnumber:	YV1FW8481F1221791	Versionname:	V60 BRE D2 Kinetic 115PK
First Registrationdate:	25/07/2014	Fiscalpower:	
Expertise Mileage:	86932	Power Kw:	84
Bodytype:		Body color:	Silver
Gearbox:	MAN 6 VIT	Paint type:	Metalic
Transmission:	Front	Rims summer:	Aluminium
Fueltype:	Diesel	Oil level:	OK
Battery functioning:	Yes	Parking lot:	3303
Number of doors:	5		
Number of seats:	5		
Number head rests:	5		
Rims summer:	Aluminium		
Category:	Passenger Car		
Oil level:	OK		
Registration Certificate Car (BE):	Yes		

Options

Radio CD		Central consol F	
GPS storage	HD	Luggage cover	
GPS storage		Rear parking sensors	
Windows electric F		Type of Tow bar	Tow bar fixed
Windows electric R			
Cruise Control			
Steering wheel multifunctional			
Radio multimedia			
Type of headlighting	Headlighting Halogen		
Type of GPS	GPS big screen color		
Type of Lining	Lining fabrics		
Type of climate control	Autom climate control		

Limited Technical Inspection

Airco functioning	OK	Battery functioning	Yes
Tires wear profile	OK	Power steering	Yes
Idle position	OK	Sound engine	OK
Engine startingtime	OK	Clutch test	OK
Exhaust gass	OK	Wiper fluid level	OK
Handbrake	OK	Transmission	OK
		Lighting	OK
		Wiperblades	OK

Degree of wear

	205/60/16/96 H LightMetal			
Summer tyres:	Fr.L.	Michelin: 4 mm	Fr.R.	Michelin: 4 mm
	Re.L.	Michelin: 6 mm	Re.R.	Michelin: 6 mm

Assistance equipment

Repair kit	Yes	Compressor	Yes
------------	------------	------------	------------

Total cost ex VAT	1368,51
Rearlight R tailgate, Damaged, E - Replace	124,20



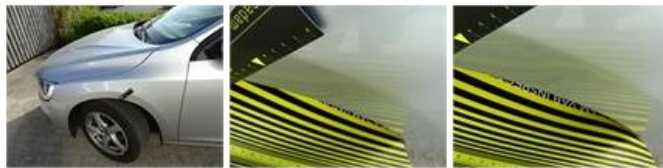
Rocker panel inner R L, Bump(s), LI - Repair and paint (complete)	115,56
---	---------------



Door F R, Scratch(es), LI - Repair and paint (complete) 318,35



Wing F L, Bump(s), PDR - Knock out without painting 82,80



Door R R, Scratch(es), Acceptable 0,00

No pictures to display

Rearview mirror housing R, Scratch(es), Acceptable 0,00

No pictures to display

Alloy rim R L, Scratch(es), LI - Repair and paint (complete) 95,00



Front bumper, Scratch(es), LI - Repair and paint (complete) 211,80



Alloy rim F L, Scratch(es), LI - Repair and paint (complete) 95,00



Door frame F L, Scratch(es), Acceptable 0,00

No pictures to display

Door panel R R, Damaged, E - Replace 114,00



Wing F R, Scratch(es), Acceptable 0,00

No pictures to display

