



VOLVO S60: 1GDE842

Vinnnumber:	YV1FS8481E2300963	Versionname:	S60 BER D2 Kinetic 115PK
First Registrationdate:	6/01/2014	Fiscalpower:	
Expertise Mileage:	99993	Power Kw:	84
Bodytype:		Body color:	Black
Gearbox:	MAN 6 VIT	Paint type:	Metalic
Transmission:	Front	Rims summer:	Aluminium
Fueltype:	Diesel	Oil level:	OK
Maintenance:	OK	Parking lot:	4706
Battery functioning:	Yes		
Number of doors:	5		
Number of seats:	5		
Number head rests:	5		
Rims summer:	Aluminium		
Category:	Passenger Car		
Oil level:	OK		
Registration Certificate Car (BE):	Yes		

Options

Radio CD		Seats electric F L	
GPS storage	HD	Central consol F	
GPS storage		Luggage cover	
Windows electric F		Rear parking sensors	
Windows electric R		Type of Tow bar	No Tow bar
Cruise Control			
Steering wheel multifunctional			
Type of headlighting	Headlighting Halogen		
Type of GPS	GPS big screen color		
Type of Lining	Lining leather		
Type of climate control	Autom climate control		

Limited Technical Inspection

Airco functioning	OK	Battery functioning	Yes
Tires wear profile	OK	Power steering	Yes
Idle position	OK	Sound engine	OK
Engine startingtime	OK	Clutch test	OK
Exhaust gass	OK	Wiper fluid level	OK
Handbrake	OK	Transmission	OK
		Lighting	OK
		Wiperblades	OK

Degree of wear

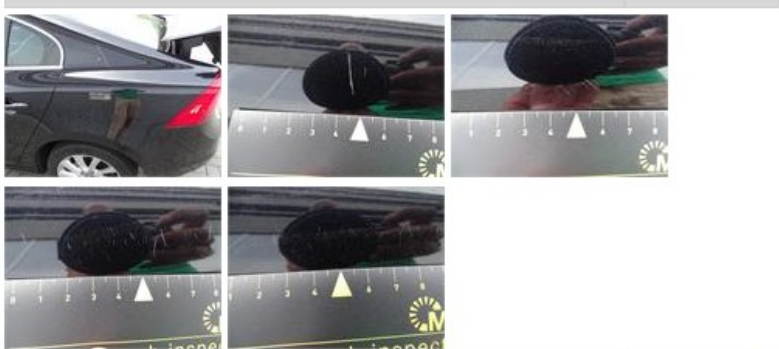
	215/50/17/95 W LightMetal			
Summer tyres:	Fr.L.	Michelin: 3 mm	Fr.R.	Michelin: 3 mm
	Re.L.	Michelin: 5 mm	Re.R.	Michelin: 5 mm

Assistance equipment

Repair kit	Yes	Compressor	Yes
------------	------------	------------	------------

Total cost ex VAT 1127,80

Wing R L, Scratch(es), LI - Repair and paint (complete) 308,20



Door R R, Scratch(es), Acceptable	0,00
<i>No pictures to display</i>	
Bumper R, Scratch(es), LI - Repair and paint (complete)	211,80
Headlight L, Scratch(es), E - Replace	396,00
Front bumper, Scratch(es), LI - Repair and paint (complete)	211,80
Wing R R, Bad repair, Acceptable	0,00
<i>No pictures to display</i>	
Wing F R, Scratch(es), Acceptable	0,00
<i>No pictures to display</i>	