



VOLVO V60: 1FRG512

Vinnnumber:	YV1FW8481E1161992	Versionname:	V60 BRE D2 Kinetic 115PK
First Registrationdate:	1/10/2013	Fiscalpower:	
Expertise Mileage:	148977	Power Kw:	84
Bodytype:		Body color:	Dark Blue
Gearbox:	MAN 6 VIT	Paint type:	Metalic
Transmission:	Front	Rims summer:	Aluminium
Fueltype:	Diesel	Oil level:	OK
Battery functioning:	Yes	Parking lot:	2605
Number of doors:	5		
Number of seats:	5		
Number head rests:	5		
Rims summer:	Aluminium		
Category:	Passenger Car		
Oil level:	OK		
Registration Certificate Car (BE):	Yes		

Options

Radio CD		Central consol F	
GPS storage		Luggage cover	
GPS storage	HD	Rear parking sensors	
Windows electric F		Type of Tow bar	Tow bar removable
Windows electric R			
Cruise Control			
Steering wheel multifunctional			
Type of headlighting	Headlighting Halogen		
Type of GPS	GPS big screen color		
Type of Lining	Lining leather		
Type of climate control	Autom climate control		

Limited Technical Inspection

Airco functioning	OK	Battery functioning	Yes
Tires wear profile	OK	Power steering	Yes
Idle position	OK	Sound engine	OK
Engine startingtime	OK	Clutch test	OK
Exhaust gass	OK	Wiper fluid level	OK
Handbrake	OK	Transmission	OK
		Lighting	OK
		Wiperblades	OK

Degree of wear

	205/60/16/96 W LightMetal			
Summer tyres:	Fr.L.	Michelin: 4 mm	Fr.R.	Michelin: 4 mm
	Re.L.	Michelin: 4 mm	Re.R.	Michelin: 4 mm

Assistance equipment

Repair kit	Yes	Compressor	Yes
------------	------------	------------	------------

Total cost ex VAT	2988,82
-------------------	---------

Door R R, Bump(s) and scratch(es), LI - Repair and paint (complete)	414,35
---	--------



Daytime running lights R, Scratch(es), E - Replace	25,00
--	-------



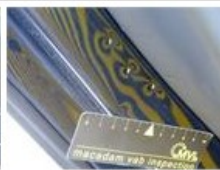
Door F L, Bump(s) and scratch(es), It - Spot repair 115,56



Alloy rim F R, Scratch(es), LI - Repair and paint (complete) 95,00



Door R L, Bump(s) and scratch(es), It - Spot repair 115,56



Alloy rim R R, Scratch(es), LI - Repair and paint (complete) 95,00



Outer door handle F L, Scratch(es), LI - Repair and paint (complete) 115,56



Sill outer L, Repaired, P - Check 0,00



Engine, Not original part, P - Check 0,00



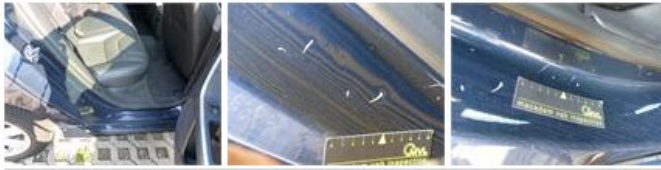
Alloy rim R L, Scratch(es), LI - Repair and paint (complete) 95,00



Roof, Scratch(es), Acceptable 0,00



Door frame R R, Bump(s) and scratch(es), It - Spot repair 115,56



Wing R R, Bump(s) and scratch(es), LI - Repair and paint (complete) 356,20



Tailgate, Bump(s) and scratch(es), LI - Repair and paint (complete) 373,68



Alloy rim F L, Scratch(es), LI - Repair and paint (complete) 95,00



Door F R, Scratch(es), LI - Repair and paint (complete) 318,35



Door panel F L, Damaged, E - Replace 114,00



Rearview mirror housing R, Scratch(es), Acceptable 0,00



Wing R L, Scratch(es), LI - Repair and paint (complete) 308,20



Interior, Dirty, Cleaning 25,00





Bumper R, Bump(s) and scratch(es), LI - Repair and paint (complete) 211,80

