



VOLVO V40: 1FOR155			
Vinnnumber:	<b>YV1MV8461E2098245</b>	Versionname:	<b>V40 D2 Base 115PK</b>
First Registrationdate:	<b>9/09/2013</b>	Fiscalpower:	
Expertise Mileage:	<b>193299</b>	Power Kw:	<b>84</b>
Bodytype:		Body color:	<b>Black</b>
Gearbox:	<b>MAN 6 VIT</b>	Paint type:	<b>Metalic</b>
Transmission:		Rims summer:	<b>Aluminium</b>
Fueltype:	<b>Diesel</b>	Oil level:	<b>OK</b>
Battery functioning:	<b>Yes</b>	Parking lot:	<b>2524</b>
Number of doors:	<b>5</b>		
Number of seats:	<b>5</b>		
Number head rests:	<b>5</b>		
Rims summer:	<b>Aluminium</b>		
Category:	<b>Passenger Car</b>		
Oil level:	<b>OK</b>		
Registration Certificate Car (BE):	<b>Yes</b>		

Options	
Radio CD	Central consol F
Windows electric F	Luggage cover
Windows electric R	Rear parking sensors
Cruise Control	Type of Tow bar
Steering wheel multifunctional	<b>No Tow bar</b>
Radio multimedia	
Type of headlighting	<b>Headlighting Halogen</b>
Type of GPS	<b>GPS big screen color</b>
Type of Lining	<b>Lining leather and alcantara</b>
Type of climate control	<b>Manual climate control</b>

Limited Technical Inspection			
Airco functioning	<b>OK</b>	Battery functioning	<b>Yes</b>
Tires wear profile	<b>OK</b>	Power steering	<b>Yes</b>
Idle position	<b>OK</b>	Sound engine	<b>OK</b>
Engine startingtime	<b>OK</b>	Clutch test	<b>OK</b>
Exhaust gass	<b>OK</b>	Wiper fluid level	<b>OK</b>
Handbrake	<b>OK</b>	Transmission	<b>OK</b>
		Lighting	<b>OK</b>
		Wiperblades	<b>OK</b>

Degree of wear				
	<b>205/50/17/93 W LightMetal</b>			
Summer tyres:	Fr.L.	<b>Continental: 4 mm</b>	Fr.R.	<b>Continental: 4 mm</b>
	Re.L.	<b>Pirelli: 4 mm</b>	Re.R.	<b>Pirelli: 4 mm</b>

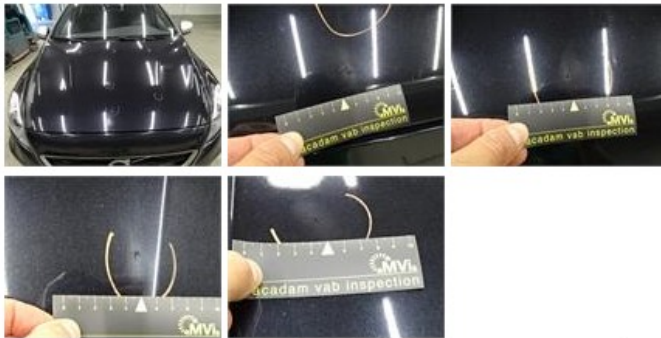
Assistance equipment			
Repair kit	<b>Yes</b>	Compressor	<b>Yes</b>
Total cost ex VAT			1165,06
Alloy rim R L polished, Scratch(es), LI - Repair and paint (complete)			95,00



Alloy rim R R polished, Scratch(es), LI - Repair and paint (complete)	95,00
---	-------



Bonnet, Scratch(es), LI - Repair and paint (complete) 290,08



Front bumper, Bad repair, Acceptable 0,00



Alloy rim F R polished, Scratch(es), LI - Repair and paint (complete) 95,00



Wing F R, Bump(s), LI - Repair and paint (complete) 220,18



Bumper R, Scratch(es), LI - Repair and paint (complete) 211,80



Door F R, Bump(s), Acceptable 0,00

No pictures to display

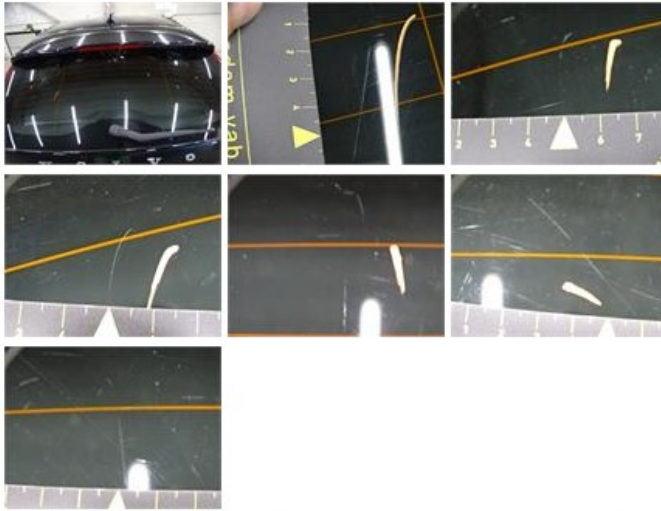
Wing F L, Bump(s), PDR - Knock out without painting 63,00



Door R R, Scratch(es), Acceptable 0,00

No pictures to display

Rear window, Scratch(es), E - Replace 0,00



Wing R R, Scratch(es), Acceptable 0,00

No pictures to display

Door R L, Scratch(es), Acceptable 0,00

No pictures to display

Alloy rim F L polished, Scratch(es), LI - Repair and paint (complete) 95,00

