


**MERCEDES A: 1LBH673**

Vinnumber:	<b>WDD1760121V089195</b>	Versionname:	<b>1.5 A 180 CDI</b>
First Registrationdate:	<b>10/08/2015</b>	Fiscalpower:	
Expertise Mileage:	<b>49848</b>	Power Kw:	<b>80</b>
Bodytype:	<b>Hatchback</b>	Body color:	<b>Dark Grey</b>
Gearbox:	<b>MAN 6 VIT</b>	Paint type:	<b>Metalic</b>
Transmission:	<b>Front</b>	Rims summer:	<b>Steel</b>
Fueltype:	<b>Diesel</b>	Oil level:	<b>OK</b>
Battery functioning:	<b>Yes</b>	Parking lot:	<b>4432</b>
Number of doors:	<b>5</b>		
Number of seats:	<b>5</b>		
Number head rests:	<b>5</b>		
Rims summer:	<b>Steel</b>		
Category:	<b>Passenger Car</b>		
Oil level:	<b>OK</b>		
Registration Certificate Car (BE):	<b>Yes</b>		

**Options**

Radio CD	Central consol F
Windows electric F	Luggage cover
Windows electric R	
Steering wheel multifunctional	
Radio multimedia	
Type of headlighting	<b>Headlighting Halogen</b>
Type of GPS	<b>GPS big screen color</b>
Type of Lining	<b>Lining fabrics</b>
Type of climate control	<b>Manual climate control</b>

**Limited Technical Inspection**

Airco functioning	<b>OK</b>	Battery functioning	<b>Yes</b>
Tires wear profile	<b>OK</b>	Power steering	<b>Yes</b>
Idle position	<b>OK</b>	Sound engine	<b>OK</b>
Engine startingtime	<b>OK</b>	Clutch test	<b>OK</b>
Exhaust gass	<b>OK</b>	Wiper fluid level	<b>OK</b>
Handbrake	<b>OK</b>	Transmission	<b>OK</b>
		Lighting	<b>OK</b>
		Wiperblades	<b>OK</b>

**Degree of wear**

185/65/15/95 V Steel				
Summer tyres:	Fr.L.	Michelin: 4 mm	Fr.R.	Michelin: 4 mm
	Re.L.	Michelin: 6 mm	Re.R.	Michelin: 6 mm

**Assistance equipment**

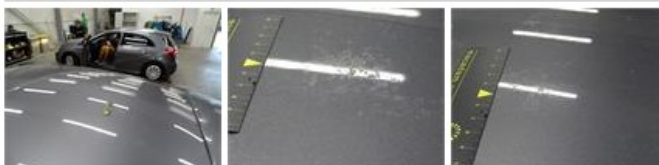
Repair kit	<b>Yes</b>	Compressor	<b>Yes</b>
------------	------------	------------	------------

Total cost ex VAT	541,50
-------------------	--------

Wheel cover R L, Scratch(es), Acceptable	0,00
------------------------------------------	------

*No pictures to display*

Roof, Chemical polution, LI - Repair and paint (complete)	481,50
-----------------------------------------------------------	--------



Wheel cover F L, Scratch(es), E - Replace	30,00
-------------------------------------------	-------



Wheel cover F R, Scratch(es), E - Replace	30,00
-------------------------------------------	-------



Front bumper, Scratch(es), Acceptable	0,00
---------------------------------------	------

*No pictures to display*

Bumper R, Scratch(es), Acceptable	0,00
-----------------------------------	------

*No pictures to display*