



## PEUGEOT 508: 1GVK001

Vinnnumber:	<b>VF38E9HD8EL019865</b>	Versionname:	<b>508 SW e-HDi Active STT</b>
First Registrationdate:	<b>12/05/2014</b>	Fiscalpower:	<b>115PK</b>
Expertise Mileage:	<b>91834</b>	Power Kw:	<b>84</b>
Bodytype:	<b>Break</b>	Body color:	<b>Dark Brown</b>
Gearbox:	<b>MAN 6 VIT</b>	Paint type:	<b>Metalic</b>
Transmission:		Rims summer:	<b>Aluminium</b>
Fueltype:	<b>Diesel</b>	Oil level:	<b>OK</b>
Battery functioning:	<b>Yes</b>	Parking lot:	<b>2606</b>
Number of doors:	<b>5</b>		
Number of seats:	<b>5</b>		
Number head rests:	<b>5</b>		
Rims summer:	<b>Aluminium</b>		
Category:	<b>Passenger Car</b>		
Oil level:	<b>OK</b>		
Registration Certificate Car (BE):	<b>Yes</b>		

## Options

Radio CD		Panoramic roof	
Windows electric F		Central consol F	
Cruise Control		Luggage cover	
Steering wheel multifunctional		Front parking sensors	
Radio multimedia		Rear parking sensors	
Type of headlighting	<b>Headlighting Halogen</b>		
Type of GPS	<b>GPS big screen color</b>		
Type of Lining	<b>Lining fabrics</b>		
Type of climate control	<b>Autom climate control</b>		
Head-up Display			

## Limited Technical Inspection

Airco functioning	<b>OK</b>	Battery functioning	<b>Yes</b>
Tires wear profile	<b>OK</b>	Power steering	<b>Yes</b>
Idle position	<b>OK</b>	Sound engine	<b>OK</b>
Engine startingtime	<b>OK</b>	Clutch test	<b>OK</b>
Exhaust gass	<b>OK</b>	Wiper fluid level	<b>OK</b>
Handbrake	<b>OK</b>	Transmission	<b>OK</b>
		Lighting	<b>OK</b>
		Wiperblades	<b>OK</b>

## Degree of wear

	<b>215/60/16/99 H LightMetal</b>			
Summer tyres:	Fr.L.	<b>Hankook: 7 mm</b>	Fr.R.	<b>Hankook: 7 mm</b>
	Re.L.	<b>Hankook: 7 mm</b>	Re.R.	<b>Hankook: 7 mm</b>

## Assistance equipment

Spare wheel	<b>Yes</b>	Jack	<b>Yes</b>
-------------	------------	------	------------

Total cost ex VAT	731,98
-------------------	--------

Bonnet, Chemical polution, Acceptable	0,00
---------------------------------------	------

No pictures to display

Door F L, Dent(s), Acceptable	0,00
-------------------------------	------

No pictures to display

Alloy rim F L, Scratch(es), LI - Repair and paint (complete)	95,00
--	-------

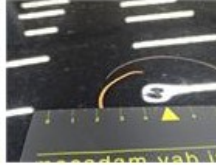
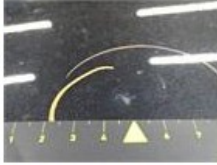




Wing F L, Scratch(es), LI - Repair and paint (complete) 220,18



Roof, Dent(s) and scratch(es), It - Spot repair 110,00



Wing R L, Dent(s), Acceptable 0,00

No pictures to display

Alloy rim R L, Scratch(es), LI - Repair and paint (complete) 95,00



Front bumper, Scratch(es), LI - Repair and paint (complete) 211,80

