



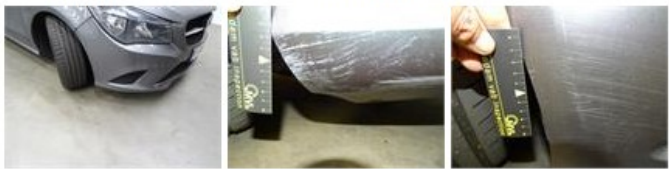
<b>MERCEDES CLA: 1HKG911</b>			
Vinnnumber:	<b>WDD1173121N108439</b>	Versionname:	<b>CLA BER 180 CDI 109PK</b>
First Registrationdate:	<b>8/08/2014</b>	Fiscalpower:	
Expertise Mileage:	<b>162046</b>	Power Kw:	<b>80</b>
Bodytype:	<b>Berline</b>	Body color	<b>Dark Grey</b>
Gearbox:	<b>MAN 6 VIT</b>	Paint type	<b>Metalic</b>
Transmission:	<b>Front</b>	Rims summer	<b>Aluminium</b>
Fueltype:	<b>Diesel</b>	Oil level	<b>OK</b>
Battery functioning	<b>Yes</b>	Parking lot	<b>4621</b>
Number of doors	<b>5</b>		
Number of seats	<b>5</b>		
Number head rests	<b>5</b>		
Rims summer	<b>Aluminium</b>		
Category	<b>Passenger Car</b>		
Oil level	<b>OK</b>		
Registration Certificate Car (BE)	<b>Yes</b>		

<b>Options</b>	
Radio CD	Central consol F
Windows electric F	
Windows electric R	
Cruise Control	
Steering wheel multifunctional	
Seats F heated	
Radio multimedia	
Type of headlighting	<b>Headlighting Halogen</b>
Type of GPS	<b>GPS big screen color</b>
Type of Lining	<b>Lining leather</b>
Type of climate control	<b>Manual climate control</b>

<b>Limited Technical Inspection</b>			
Airco functioning	<b>OK</b>	Battery functioning	<b>Yes</b>
Tires wear profile	<b>OK</b>	Power steering	<b>Yes</b>
Idle position	<b>OK</b>	Sound engine	<b>OK</b>
Engine startingtime	<b>OK</b>	Clutch test	<b>OK</b>
Exhaust gass	<b>OK</b>	Wiper fluid level	<b>OK</b>
Handbrake	<b>OK</b>	Transmission	<b>OK</b>
		Lighting	<b>OK</b>
		Wiperblades	<b>OK</b>

<b>Degree of wear</b>				
	<b>225/40/18/92 W LightMetal</b>			
Summer tyres:	Fr.L.	<b>Michelin: 3 mm</b>	Fr.R.	<b>Michelin: 3 mm</b>
	Re.L.	<b>Michelin: 5 mm</b>	Re.R.	<b>Michelin: 5 mm</b>

<b>Assistance equipment</b>			
Repair kit	<b>Yes</b>	Compressor	<b>Yes</b>
<b>Total cost ex VAT</b>		<b>518,60</b>	
<b>Alloy rim F L, Scratch(es), Acceptable</b>		<b>0,00</b>	
<i>No pictures to display</i>			
<b>Front bumper, Scratch(es), LI - Repair and paint (complete)</b>		<b>211,80</b>	



<b>Alloy rim F R polished, Scratch(es), LI - Repair and paint (complete)</b>	<b>95,00</b>
--	--------------



Bumper R, Dent(s), LI - Repair and paint (complete)

211,80



Door R R, Dent(s), Acceptable

0,00

*No pictures to display*