



<b>VOLVO S60: 1FLQ766</b>			
Vinnumber:	<b>YV1FS84A1D2230975</b>	Versionname:	<b>S60 BER D2 Kinetic St/St</b>
First Registrationdate:	<b>8/08/2013</b>	Fiscalpower:	<b>115PK</b>
Expertise Mileage:	<b>154648</b>	Power Kw:	<b>84</b>
Bodytype:		Body color:	<b>Grey</b>
Gearbox:	<b>MAN 6 VIT</b>	Paint type:	<b>Metalic</b>
Transmission:		Rims summer:	<b>Aluminium</b>
Fueltype:	<b>Diesel</b>	Oil level:	<b>OK</b>
Battery functioning:	<b>Yes</b>	Parking lot:	<b>2222</b>
Number of doors:	<b>4</b>		
Number of seats:	<b>5</b>		
Number head rests:	<b>5</b>		
Rims summer:	<b>Aluminium</b>		
Category:	<b>Passenger Car</b>		
Oil level:	<b>OK</b>		

<b>Options</b>			
Radio CD		Central consol F	
Windows electric F		Front parking sensors	
Windows electric R		Rear parking sensors	
Cruise Control		Type of Tow bar	<b>No Tow bar</b>
Steering wheel multifunctional			
Radio multimedia			
Type of headlighting	<b>Headlighting Halogen</b>		
Type of GPS	<b>GPS big screen color</b>		
Type of Lining	<b>Lining fabrics</b>		
Type of climate control	<b>Autom climate control</b>		

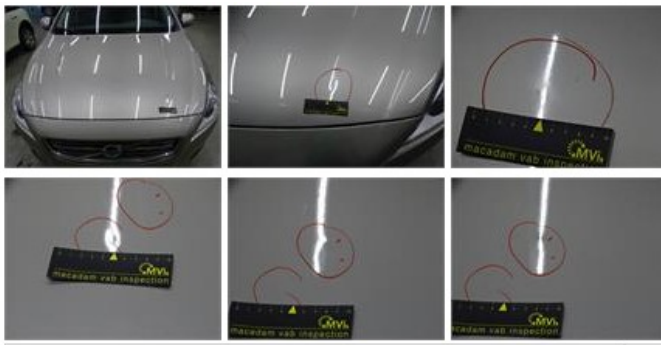
<b>Limited Technical Inspection</b>			
Airco functioning	<b>OK</b>	Battery functioning	<b>Yes</b>
Tires wear profile	<b>OK</b>	Power steering	<b>Yes</b>
Idle position	<b>OK</b>	Sound engine	<b>OK</b>
Engine startingtime	<b>OK</b>	Clutch test	<b>OK</b>
Exhaust gass	<b>OK</b>	Wiper fluid level	<b>OK</b>
Handbrake	<b>OK</b>	Transmission	<b>OK</b>
		Lighting	<b>OK</b>
		Wiperblades	<b>OK</b>

<b>Degree of wear</b>				
	<b>235/55/17/97 W LightMetal</b>			
Summer tyres:	Fr.L.	<b>Michelin: 5 mm</b>	Fr.R.	<b>Michelin: 5 mm</b>
	Re.L.	<b>Michelin: 5 mm</b>	Re.R.	<b>Michelin: 5 mm</b>

<b>Assistance equipment</b>			
Repair kit	<b>Yes</b>	Compressor	<b>Yes</b>
<b>Total cost ex VAT</b>			<b>786,88</b>
<b>Alloy rim F L, Scratch(es), LI - Repair and paint (complete)</b>			<b>95,00</b>



<b>Bonnet, Dent(s) and scratch(es), LI - Repair and paint (complete)</b>	<b>290,08</b>
--	---------------



Alloy rim R R, Scratch(es), LI - Repair and paint (complete) 95,00



Front bumper, Scratch(es), LI - Repair and paint (complete) 211,80



Bumper R, Scratch(es), Acceptable 0,00

No pictures to display

Alloy rim F R, Scratch(es), LI - Repair and paint (complete) 95,00



Roof, Scratch(es), Acceptable 0,00

No pictures to display