



**BMW 1: 1FES725**

Vinnumber:	<b>WBA1C91020J512199</b>	Versionname:	<b>1 HATCH 116d Eff.Dyn.Ed. 116PK</b>
First Registrationdate:	<b>10/06/2013</b>	Fiscalpower:	
Expertise Mileage:	<b>153140</b>	Power Kw:	<b>85</b>
Bodytype:	<b>Hatchback</b>	Body color:	<b>Grey</b>
Gearbox:	<b>MAN 6 VIT</b>	Paint type:	<b>Metalic</b>
Transmission:	<b>Back</b>	Rims summer:	<b>Aluminium</b>
Fueltype:	<b>Diesel</b>	Oil level:	<b>OK</b>
Battery functioning:	<b>Yes</b>	Parking lot:	<b>3730</b>
Number of doors:	<b>5</b>		
Number of seats:	<b>5</b>		
Number head rests:	<b>5</b>		
Rims summer:	<b>Aluminium</b>		
Category:	<b>Passenger Car</b>		
Oil level:	<b>OK</b>		
Registration Certificate Car (BE):	<b>Yes</b>		

**Options**

Radio CD		Central consol F
GPS storage	<b>HD</b>	Luggage cover
GPS storage		
Windows electric F		
Windows electric R		
Steering wheel multifunctional		
Radio multimedia		
Type of headlighting	<b>Headlighting Halogen</b>	
Type of GPS	<b>GPS big screen color</b>	
Type of Lining	<b>Lining fabrics</b>	
Type of climate control	<b>Manual climate control</b>	

**Limited Technical Inspection**

Airco functioning	<b>OK</b>	Battery functioning	<b>Yes</b>
Tires wear profile	<b>OK</b>	Power steering	<b>Yes</b>
Idle position	<b>OK</b>	Sound engine	<b>OK</b>
Engine startingtime	<b>OK</b>	Clutch test	<b>OK</b>
Exhaust gass	<b>OK</b>	Wiper fluid level	<b>OK</b>
Handbrake	<b>OK</b>	Transmission	<b>OK</b>
		Lighting	<b>OK</b>
		Wiperblades	<b>OK</b>

**Degree of wear**

<b>205/55/16/91 W LightMetal</b>				
Summer tyres:	Fr.L.	Michelin: 3 mm	Fr.R.	Michelin: 3 mm
	Re.L.	Michelin: 4 mm	Re.R.	Michelin: 4 mm

**Assistance equipment**

Repair kit	<b>Yes</b>	Compressor	<b>Yes</b>
------------	------------	------------	------------

Total cost ex VAT	<b>531,35</b>
-------------------	---------------

Door F R, Dent(s), Acceptable	<b>0,00</b>
-------------------------------	-------------



Alloy rim F L, Scratch(es), Acceptable	<b>0,00</b>
--	-------------



Wing R R, Dent(s), Acceptable 0,00



Wing R R, Bad repair, Acceptable 0,00



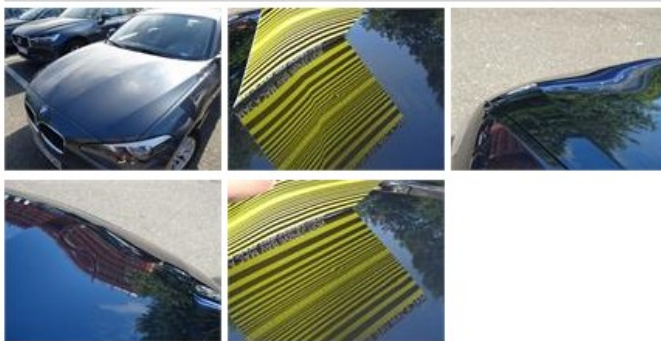
Door R R, Scratch(es), Acceptable 0,00



Tailgate, Scratch(es), Acceptable 0,00



Bonnet, Hail damage, PDR - Hail 150,00



Trunk lid covering R, Scratch(es), Acceptable 0,00



Rear window, Scratch(es), Acceptable 0,00



Bumper R, Scratch(es), Acceptable 0,00



Alloy rim R R, Scratch(es), Acceptable 0,00



Door R L, Dent(s) and scratch(es), LI - Repair and paint (complete) 318,35



Roof, Dent(s), PDR - Knock out without painting 63,00



Wing F R, Scratch(es), Acceptable 0,00



Interior, Stain, Acceptable 0,00

