



**BMW 3: 1GXL956**

Vinnumber:	<b>WBA3Y11030D450015</b>	Versionname:	
First Registrationdate:	<b>27/05/2018</b>	Fiscalpower:	
Expertise Mileage:	<b>171928</b>	Power Kw:	
Bodytype:		Body color	<b>Black</b>
Gearbox:	<b>MAN 6 VIT</b>	Rims summer	<b>Aluminium</b>
Transmission:	<b>Back</b>	Parking lot	<b>2826</b>
Fueltype:	<b>Diesel</b>		
Number of seats	<b>5</b>		
Number head rests	<b>5</b>		
Rims summer	<b>Aluminium</b>		
Category	<b>Passenger Car</b>		
Registration Certificate Car (BE)	<b>Yes</b>		

**Options**

Radio CD	Luggage cover
GPS storage	Rear parking sensors
GPS storage	<b>HD</b>
Windows electric F	
Windows electric R	
Cruise Control	
Steering wheel multifunctional	
Type of headlighting	<b>Headlighting Halogen</b>
Type of GPS	<b>GPS big screen color</b>
Type of Lining	<b>Lining artificial leather</b>
Type of climate control	<b>Autom climate control</b>

**Limited Technical Inspection**

**Degree of wear**

	<b>225/55/17/97 Y LightMetal</b>			
Summer tyres:	Fr.L.	<b>Michelin: 6 mm</b>	Fr.R.	<b>Michelin: 6 mm</b>
	Re.L.	<b>Michelin: 6 mm</b>	Re.R.	<b>Michelin: 6 mm</b>

**Assistance equipment**

Repair kit	<b>Yes</b>	Compressor	<b>Yes</b>
------------	------------	------------	------------

Total cost ex VAT	<b>1753,80</b>
-------------------	----------------

Seat cover F L, Crack, Acceptable	<b>0,00</b>
-----------------------------------	-------------

<i>No pictures to display</i>	
Bumper R, Dent(s) and scratch(es), Le - Replace and paint	<b>651,00</b>

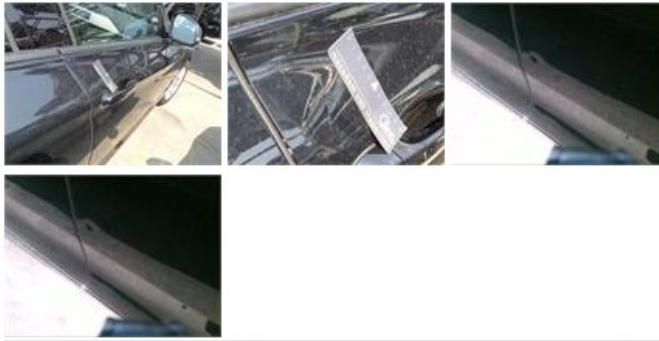


Door F R, Dent(s), PDR - Knock out without painting	<b>82,80</b>
---	--------------

<i>No pictures to display</i>	
-------------------------------	--

Door R R, Scratch(es), Acceptable

0,00



Alloy rim R R, Scratch(es), LI - Repair and paint (complete)

95,00



Alloy rim R L, Scratch(es), LI - Repair and paint (complete)

95,00



Alloy rim F L, Scratch(es), LI - Repair and paint (complete)

95,00



Front bumper, Scratch(es), LI - Repair and paint (complete)

211,80



Alloy rim F R, Scratch(es), LI - Repair and paint (complete)

95,00



Wing R R, Dent(s) and scratch(es), LI - Repair and paint (complete)

428,20



