



## VOLKSWAGEN Golf: 1ESZ408

Vinnnumber:	<b>WVWZZZAUZDW087337</b>	Versionname:	<b>GOLF BER Trendline DSG</b>
First Registrationdate:	<b>13/03/2013</b>	Fiscalpower:	<b>105PK Aut.</b>
Expertise Mileage:	<b>61620</b>	Power Kw:	<b>77</b>
Bodytype:		Body color:	<b>Grey</b>
Gearbox:	<b>Automatic</b>	Paint type:	<b>Metalic</b>
Transmission:	<b>Front</b>	Rims summer:	<b>Steel</b>
Fueltype:	<b>Diesel</b>	Oil level:	<b>OK</b>
Battery functioning:	<b>Yes</b>	Parking lot:	<b>4810</b>
Number of doors:	<b>5</b>		
Number of seats:	<b>5</b>		
Number head rests:	<b>5</b>		
Rims summer:	<b>Steel</b>		
Category:	<b>Passenger Car</b>		
Oil level:	<b>OK</b>		

## Options

Radio CD	Central consol F
Windows electric F	Luggage cover
Windows electric R	
Cruise Control	
Steering wheel multifunctional	
Radio multimedia	
Type of headlighting:	<b>Headlighting Halogen</b>
Type of Lining:	<b>Lining fabrics</b>
Type of climate control:	<b>Autom climate control</b>

## Limited Technical Inspection

Airco functioning	<b>OK</b>	Battery functioning	<b>Yes</b>
Tires wear profile	<b>OK</b>	Power steering	<b>Yes</b>
Idle position	<b>OK</b>	Sound engine	<b>OK</b>
Engine startingtime	<b>OK</b>	Clutch test	<b>NOT OK</b>
Exhaust gass	<b>OK</b>	Wiper fluid level	<b>OK</b>
Handbrake	<b>OK</b>	Transmission	<b>OK</b>
		Lighting	<b>OK</b>
		Wiperblades	<b>OK</b>

## Degree of wear

	<b>195/65/15/91 H Steel</b>			
Summer tyres:	Fr.L.	<b>Michelin: 5 mm</b>	Fr.R.	<b>Michelin: 5 mm</b>
	Re.L.	<b>Michelin: 5 mm</b>	Re.R.	<b>Michelin: 5 mm</b>

## Assistance equipment

Emergency spare wheel	<b>Yes</b>	Jack	<b>Yes</b>
-----------------------	------------	------	------------

Total cost ex VAT	<b>902,47</b>
-------------------	---------------

Front bumper, Scratch(es), Acceptable	<b>0,00</b>
---------------------------------------	-------------

*No pictures to display*

Door R R, Scratch(es), Acceptable	<b>0,00</b>
-----------------------------------	-------------

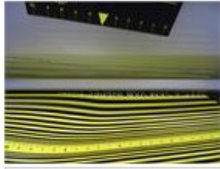
*No pictures to display*

Interior, Dirty, Acceptable	<b>0,00</b>
-----------------------------	-------------





Door F R, Dent(s) and scratch(es), LI - Repair and paint (complete) 366,35



Bodywork, Not original part, Acceptable 0,00



Bumper R, Scratch(es), LI - Repair and paint (complete) 211,80



Wing F L, Dent(s), PDR - Knock out without painting 63,00



Seat cover F L, Hole, Smart repair 64,32



Wing F L, Scratch(es), Acceptable 0,00

No pictures to display

Tailgate, Dent(s), Acceptable 0,00

No pictures to display

Bonnet, Dent(s), PDR - Knock out without painting 63,00



Trunk lid covering R, Scratch(es), E - Replace 134,00

