



LEXUS RX450: 772BQR

Vinnnumber:	JTJBC11A002411350	Versionname:	RX 450h Luxury Pack
First Registrationdate:	11/05/2010	Fiscalpower:	249PK Aut.
Expertise Mileage:	149561	Power Kw:	183
Bodytype:	SUV	Body color	Brown
Gearbox:	Automatic	Paint type	Metalic
Transmission:		Rims summer	Aluminium
Fueltype:	Hybrid Petrol	Oil level	OK
Battery functioning	Yes	Parking lot	3202
Number of doors	5		
Number of seats	5		
Number head rests	5		
Rims summer	Aluminium		
Category	Passenger Car		
Oil level	OK		

Options

Radio CD		Seats electric F L	
Windows electric F		Seats electric F R	
Windows electric R		Seats F L ventilated	
Cruise Control		Seats F R ventilated	
Steering wheel multifunction		Central consol F	
Seats F heated		Luggage cover	
Type of headlighting	Headlighting Halogen	Front parking sensors	
Type of GPS	GPS big screen color	Rear parking sensors	
Type of Lining	Lining leather	Type of Tow bar	Tow bar removable
Type of climate control	Autom climate control		
Level control			

Limited Technical Inspection

Airco functioning	OK	Battery functioning	Yes
Tires wear profile	OK	Power steering	Yes
Idle position	OK	Sound engine	OK
Engine startingtime	OK	Clutch test	OK
Exhaust gass	OK	Wiper fluid level	OK
Handbrake	OK	Transmission	OK
		Lighting	OK
		Wiperblades	OK

Degree of wear

	235/55/19/101 V LightMetal			
Summer tyres:	Fr.L.	Bridgestone: 6 mm	Fr.R.	Bridgestone: 6 mm
	Re.L.	Bridgestone: 6 mm	Re.R.	Bridgestone: 6 mm

Assistance equipment

Emergency spare wheel **Yes**

Total cost ex VAT	3029,52
Front bumper, Scratch(es), LI - Repair and paint (complete)	254,16





Bumper R, Dent(s), Smart repair

110,64



Door F R, Scratch(es), LI - Repair and paint (complete)

382,02



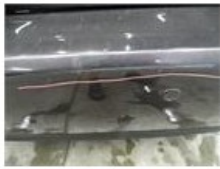
Door F L, Dent(s) and scratch(es), LI - Repair and paint (complete)

382,02



Bumper R, Crack, Le - Replace and paint

766,80





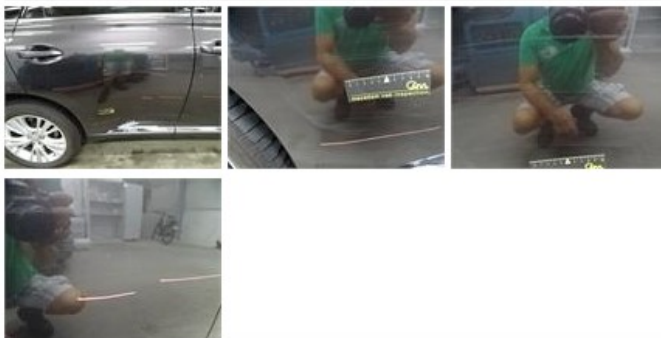
Wing R L, Scratch(es), LI - Repair and paint (complete) 369,84



Door R L, Scratch(es), LI - Repair and paint (complete) 382,02



Door R R, Scratch(es), LI - Repair and paint (complete) 382,02



Alloy rim F L, Scratch(es), Acceptable 0,00

No pictures to display