

CITROEN C4 Picasso: 1JFY647

Vinnnumber:	VF73E9HC8EJ843606	Versionname:	GR.C4 PICASSO Intensive
First Registrationdate:	8/12/2014	Fiscalpower:	115PK
Expertise Mileage:	183370	Power Kw:	85
Bodytype:		Body color	Black
Gearbox:	MAN 6 VIT	Paint type	Metalic
Transmission:	Front	Rims summer	Aluminium
Fueltype:	Diesel	Oil level	OK
Battery functioning	Yes	Parking lot	4505
Number of doors	5		
Number of seats	5		
Number head rests	5		
Rims summer	Aluminium		
Category	Passenger Car		
Oil level	OK		
Registration Certificate Car (BE)	Yes		

Options

GPS storage		Central consol F	
GPS storage	SD	Luggage cover	
Windows electric F		Front parking sensors	
Windows electric R		Rear parking sensors	
Cruise Control		Type of Tow bar	Tow bar fixed
Steering wheel multifunctional			
Radio multimedia			
Type of headlighting	Headlighting Halogen		
Type of GPS	GPS big screen color		
Type of Lining	Lining fabrics		
Type of climate control	Autom climate control		

Limited Technical Inspection

Airco functioning	OK	Battery functioning	Yes
Tires wear profile	OK	Power steering	Yes
Idle position	OK	Sound engine	OK
Engine startingtime	OK	Clutch test	OK
Exhaust gass	OK	Wiper fluid level	OK
Handbrake	OK	Transmission	OK
		Lighting	OK
		Wiperblades	OK

Degree of wear

	205/60/16/92 H LightMetal			
Summer tyres:	Fr.L.	Kleber: 4 mm	Fr.R.	Kleber: 4 mm
	Re.L.	Pirelli: 6 mm	Re.R.	Pirelli: 6 mm

Assistance equipment

Repair kit	No	Compressor	No
Total cost ex VAT			1863,13
Door R L, Dent(s), Acceptable			0,00
<i>No pictures to display</i>			
Tailgate, Scratch(es), Acceptable			0,00
<i>No pictures to display</i>			
Sill outer R, Dent(s) and scratch(es), Le - Replace and paint			712,00

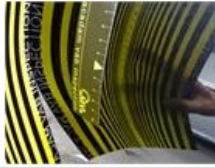
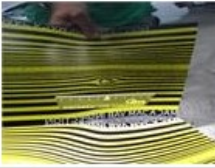




Bumper R, Scratch(es), LI - Repair and paint (complete) 211,80



Door R L, Dent(s), PDR - Knock out without painting 82,80



Wing R R, Scratch(es), Acceptable 0,00

No pictures to display

Tyre repair kit, Missing, E - Replace 210,53



Door R L, Scratch(es), Acceptable 0,00

No pictures to display

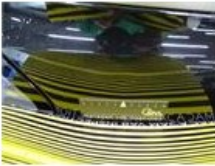
Wing R L, Scratch(es), LI - Repair and paint (complete) 308,20



Trunk lid covering R, Scratch(es), Acceptable 0,00

No pictures to display

Wing R R, Dent(s), PDR - Knock out without painting 63,00



Door R R, Dent(s), PDR - Knock out without painting 63,00



Front bumper, Scratch(es), LI - Repair and paint (complete) 211,80



