



BMW 1: 1FME872	
Vinnumber:	WBA1C31050J534243
Versionname:	1 BER HATCH 120dAS
First Registrationdate:	14/08/2013
Fiscalpower:	163PK Aut.
Expertise Mileage:	90935
Power Kw:	120
Bodytype:	Blue
Body color:	Blue
Gearbox:	Automatic
Paint type:	Metalic
Transmission:	Automatic
Rims summer:	Aluminium
Fueltype:	Diesel
Oil level:	OK
Battery functioning:	Yes
Parking lot:	2422
Number of doors:	5
Number of seats:	5
Number head rests:	5
Rims summer:	Aluminium
Category:	Passenger Car
Oil level:	OK

Options	
Radio CD	Central consol F
Windows electric F	Luggage cover
Windows electric R	Front parking sensors
Cruise Control	Rear parking sensors
Steering wheel multifunction	Type of Tow bar
Seats F heated	No Tow bar
Radio multimedia	
Type of headlighting	Headlighting Halogen
Type of GPS	No GPS
Type of Lining	Lining leather
Type of climate control	Autom climate control
Sport seats	

Limited Technical Inspection			
Airco functioning	OK	Battery functioning	Yes
Tires wear profile	OK	Power steering	Yes
Idle position	OK	Sound engine	OK
Engine startingtime	OK	Clutch test	OK
Exhaust gass	OK	Wiper fluid level	OK
Handbrake	OK	Transmission	OK
		Lighting	OK
		Wiperblades	OK

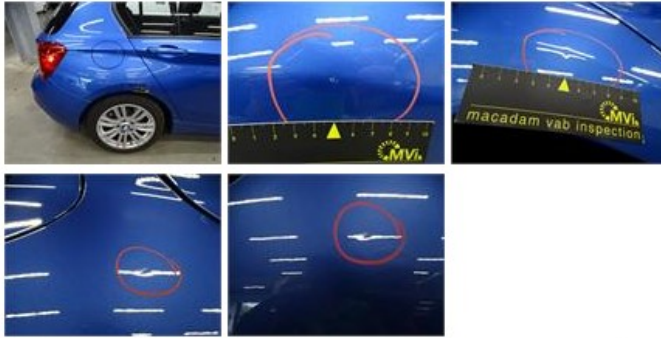
Degree of wear				
	225/45/17/91 W LightMetal			
Summer tyres:	Fr.L.	Bridgestone: 5 mm	Fr.R.	Bridgestone: 5 mm
	Re.L.	Bridgestone: 5 mm	Re.R.	Bridgestone: 5 mm

Assistance equipment	
Total cost ex VAT	403,20
Front bumper, Scratch(es), Acceptable	0,00
<i>No pictures to display</i>	
Alloy rim F R, Scratch(es), LI - Repair and paint (complete)	95,00





Wing R R, Dent(s) and scratch(es), LI - Repair and paint (complete) 308,20



Bonnet, Dent(s) and scratch(es), Acceptable 0,00

No pictures to display