



**BMW 3: 1HLE192**

Vinnumber:	<b>WBA3Y11030D450547</b>	Versionname:	<b>3 GRAN TURISMO 318d</b>
First Registrationdate:	<b>19/08/2014</b>	Fiscalpower:	<b>136PK</b>
Expertise Mileage:	<b>132595</b>	Power Kw:	<b>100</b>
Bodytype:	<b>Hatchback</b>	Body color:	<b>Blue</b>
Gearbox:	<b>MAN 6 VIT</b>	Paint type:	<b>Metalic</b>
Transmission:	<b>Back</b>	Rims summer:	<b>Aluminium</b>
Fueltype:	<b>Diesel</b>	Oil level:	<b>OK</b>
Maintenance:	<b>-1300KM</b>		
Maintenance:	<b>NOT OK</b>		
Battery functioning:	<b>Yes</b>		
Number of doors:	<b>5</b>		
Number of seats:	<b>5</b>		
Number head rests:	<b>5</b>		
Rims summer:	<b>Aluminium</b>		
Category:	<b>Passenger Car</b>		
Oil level:	<b>OK</b>		
Registration Certificate Car (BE):	<b>Yes</b>		

**Options**

Radio CD	Central consol F
GPS storage	Luggage cover
GPS storage	<b>HD</b> Front parking sensors
Windows electric F	Rear parking sensors
Windows electric R	
Cruise Control	
Steering wheel multifunctional	
Radio multimedia	
Type of headlighting	<b>Headlighting Halogen</b>
Type of GPS	<b>GPS big screen color</b>
Type of Lining	<b>Lining fabrics</b>
Type of climate control	<b>Autom climate control</b>

**Limited Technical Inspection**

Airco functioning	<b>OK</b>	Battery functioning	<b>Yes</b>
Tires wear profile	<b>OK</b>	Power steering	<b>Yes</b>
Idle position	<b>OK</b>	Sound engine	<b>OK</b>
Engine startingtime	<b>OK</b>	Clutch test	<b>OK</b>
Exhaust gass	<b>OK</b>	Wiper fluid level	<b>OK</b>
Handbrake	<b>OK</b>	Transmission	<b>OK</b>
		Lighting	<b>OK</b>
		Wiperblades	<b>OK</b>

**Degree of wear**

	<b>225/55/17/97 W LightMetal</b>			
Summer tyres:	Fr.L.	<b>Continental: 3 mm</b>	Fr.R.	<b>Continental: 3 mm</b>
	Re.L.	<b>Continental: 7 mm</b>	Re.R.	<b>Continental: 7 mm</b>

**Assistance equipment**

Repair kit	<b>Yes</b>	Compressor	<b>Yes</b>
------------	------------	------------	------------

Total cost ex VAT	<b>914,60</b>
-------------------	---------------

Wing R L, Scratch(es), Acceptable	<b>0,00</b>
-----------------------------------	-------------



Alloy rim F R, Scratch(es), LI - Repair and paint (complete)	<b>95,00</b>
--	--------------



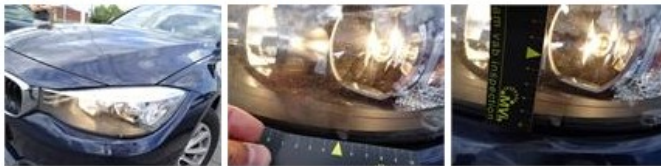
Sill outer R, Scratch(es), Acceptable 0,00



Tailgate, Scratch(es), Acceptable 0,00



Headlight L, Scratch(es), E - Replace 396,00



Front bumper, Scratch(es), LI - Repair and paint (complete) 211,80



Bumper R, Dent(s) and scratch(es), LI - Repair and paint (complete) 211,80



Door R R, Scratch(es), Acceptable 0,00



Door R R, Scratch(es), Acceptable 0,00



Door R L, Scratch(es), Acceptable 0,00



Maintenance, Maintenance, Execute 0,00

