



**MERCEDES CLA: 1HEF592**

Vinnnumber:	<b>WDD1173121N093142</b>	Versionname:	<b>CLA BER 180 CDI 109PK</b>
First Registrationdate:	<b>26/05/2014</b>	Fiscalpower:	
Expertise Mileage:	<b>161271</b>	Power Kw:	<b>80</b>
Bodytype:	<b>Berline</b>	Body color:	<b>White</b>
Gearbox:	<b>MAN 6 VIT</b>	Paint type:	<b>Metalic</b>
Transmission:	<b>Front</b>	Rims summer:	<b>Aluminium</b>
Fueltype:	<b>Diesel</b>	Oil level:	<b>OK</b>
Battery functioning:	<b>Yes</b>	Parking lot:	<b>2710</b>
Number of doors:	<b>4</b>		
Number of seats:	<b>5</b>		
Number head rests:	<b>5</b>		
Rims summer:	<b>Aluminium</b>		
Category:	<b>Passenger Car</b>		
Oil level:	<b>OK</b>		
Registration Certificate Car (BE):	<b>Yes</b>		

**Options**

Radio CD	Central consol F
Windows electric F	Front parking sensors
Windows electric R	Rear parking sensors
Steering wheel multifunctional	
Seats F heated	
Radio multimedia	
Type of headlighting	<b>Headlighting Xenon</b>
Type of GPS	<b>GPS big screen color</b>
Type of Lining	<b>Lining leather</b>
Type of climate control	<b>Autom climate control</b>

**Limited Technical Inspection**

Airco functioning	<b>OK</b>	Battery functioning	<b>Yes</b>
Tires wear profile	<b>OK</b>	Power steering	<b>Yes</b>
Idle position	<b>OK</b>	Sound engine	<b>OK</b>
Engine startingtime	<b>OK</b>	Clutch test	<b>OK</b>
Exhaust gass	<b>OK</b>	Wiper fluid level	<b>OK</b>
Handbrake	<b>OK</b>	Transmission	<b>OK</b>
		Lighting	<b>OK</b>
		Wiperblades	<b>OK</b>

**Degree of wear**

	<b>225/40/18/92 W LightMetal</b>			
Summer tyres:	Fr.L.	<b>Pirelli: 3 mm</b>	Fr.R.	<b>Pirelli: 3 mm</b>
	Re.L.	<b>Pirelli: 5 mm</b>	Re.R.	<b>Pirelli: 5 mm</b>

**Assistance equipment**

Repair kit	<b>Yes</b>	Compressor	<b>Yes</b>
------------	------------	------------	------------

<b>Total cost ex VAT</b>	<b>1050,00</b>
--------------------------	----------------

<b>Alloy rim R L polished, Scratch(es), LI - Repair and paint (complete)</b>	<b>95,00</b>
--	--------------



<b>Alloy rim R R polished, Scratch(es), LI - Repair and paint (complete)</b>	<b>95,00</b>
--	--------------



Ignition key, Missing, E - Replace 150,00

No pictures to display

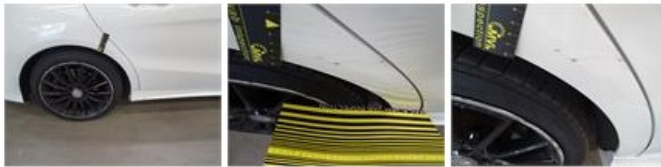
Front bumper, Scratch(es), LI - Repair and paint (complete) 211,80



Alloy rim F L polished, Scratch(es), LI - Repair and paint (complete) 95,00



Wing R R, Dent(s) and scratch(es), LI - Repair and paint (complete) 308,20



Alloy rim F R polished, Scratch(es), LI - Repair and paint (complete) 95,00

