



BMW X5: 1GHH731

Vinnumber:	WBAKS010300C46896	Versionname:	X5 2.0dA sDrive25 211PK Aut.
First Registrationdate:	7/02/2014	Fiscalpower:	
Expertise Mileage:	117443	Power Kw:	155
Bodytype:	SUV	Body color:	Black
Gearbox:	Automatic	Paint type:	Metalic
Transmission:	Back	Rims summer:	Aluminium
Fueltype:	Diesel	Oil level:	OK
Battery functioning:	Yes	Parking lot:	3203
Number of doors:	5		
Number of seats:	7		
Number head rests:	7		
Rims summer:	Aluminium		
Category:	Passenger Car		
Oil level:	OK		
Registration Certificate Car (BE):	Yes		

Options

Radio CD	Central consol F
Windows electric F	Luggage cover
Windows electric R	Rear parking sensors
Cruise Control	
Steering wheel multifunctional	
Seats F heated	
Radio multimedia	
Type of headlighting:	Headlighting Xenon
Type of GPS:	GPS big screen color
Type of Lining:	Lining leather
Type of climate control:	Autom climate control
Head-up Display	

Limited Technical Inspection

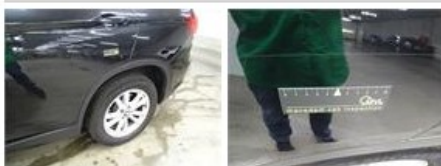
Airco functioning	OK	Battery functioning	Yes
Tires wear profile	OK	Power steering	Yes
Idle position	OK	Sound engine	OK
Engine startingtime	OK	Clutch test	OK
Exhaust gass	OK	Wiper fluid level	OK
Handbrake	OK	Transmission	OK
		Lighting	OK
		Wiperblades	OK

Degree of wear

	255/55/18/100 V LightMetal			
Summer tyres:	Fr.L.	Michelin: 4 mm	Fr.R.	Michelin: 4 mm
	Re.L.	Michelin: 6 mm	Re.R.	Michelin: 6 mm

Assistance equipment

Total cost ex VAT	3857,18
Door R L, Scratch(es), LI - Repair and paint (complete)	382,02



Wing F L, Scratch(es), LI - Repair and paint (complete)	264,21
---	--------



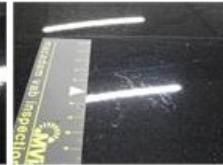
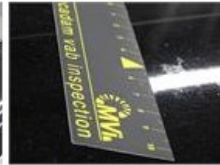
Alloy rim R R, Scratch(es), LI - Repair and paint (complete)	95,00
--	-------



Wing R R, Dent(s) and scratch(es), Acceptable	0,00
---	------

No pictures to display

Roof, Chemical polution, LI - Repair and paint (complete)	577,80
---	--------



Bonnet, Chemical polution, LI - Repair and paint (complete)	348,09
---	--------



Rear window, Scratch(es), E - Replace	420,00
---------------------------------------	--------



Door R R, Scratch(es), LI - Repair and paint (complete)	382,02
---	--------



Door F L, Scratch(es), LI - Repair and paint (complete)	382,02
---	--------



Door F R, Scratch(es), LI - Repair and paint (complete)	382,02
---	--------



Wing R L, Scratch(es), LI - Repair and paint (complete)	369,84
---	--------



Bumper R, Scratch(es), Acceptable	0,00
-----------------------------------	------

No pictures to display

Front bumper, Scratch(es), LI - Repair and paint (complete)	254,16
---	--------

