



CITROEN Jumper 35 LWB HR: 1FAY521

| | | | |
|-------------------------|---------------------------------|--------------|---|
| Vinnnumber: | VF7YCPMFC12409215 | Versionname: | JUMPER 35 B/F L3H2 Fresh GPS 177PK |
| First Registrationdate: | 13/05/2013 | Fiscalpower: | |
| Expertise Mileage: | 293885 | Power Kw: | 130 |
| Bodytype: | Transporter | Body color: | White |
| Gearbox: | MAN 6 VIT | Paint type: | Metalic |
| Transmission: | | Rims summer: | Steel |
| Fueltype: | Diesel | Oil level: | OK |
| Battery functioning: | Yes | Parking lot: | LCV06 |
| Number of doors: | 5 | | |
| Number of seats: | 3 | | |
| Number head rests: | 3 | | |
| Rims summer: | Steel | | |
| Category: | Light Commercial Vehicle | | |
| Oil level: | OK | | |

Options

| | |
|-------------------------|-------------------------------|
| Windows electric F | Central consol F |
| Cruise Control | Rear parking sensors |
| Radio multimedia | Type of Tow bar |
| Type of headlighting | Headlighting Halogen |
| Type of GPS | GPS big screen color |
| Type of Lining | Lining fabrics |
| Type of climate control | Manual climate control |
| | Tow bar fixed |

Limited Technical Inspection

| | | | |
|---------------------|-----------|---------------------|------------|
| Airco functioning | OK | Battery functioning | Yes |
| Tires wear profile | OK | Power steering | Yes |
| Idle position | OK | Sound engine | OK |
| Engine startingtime | OK | Clutch test | OK |
| Exhaust gass | OK | Wiper fluid level | OK |
| Handbrake | OK | Transmission | OK |
| | | Lighting | OK |
| | | Wiperblades | OK |

Degree of wear

| | | | | |
|---------------|------------------------------|-----------------------|-------|-----------------------|
| | 215/70/15/109 R Steel | | | |
| Summer tyres: | Fr.L. | Other: 9 mm | Fr.R. | Other: 9 mm |
| | Re.L. | Michelin: 9 mm | Re.R. | Michelin: 9 mm |

Assistance equipment

| | |
|-------------|------------|
| Spare wheel | Yes |
|-------------|------------|

| | |
|---|---------|
| Total cost ex VAT | 1266,89 |
| Trunk door R R, Dent(s) and scratch(es), It - Spot repair | 115,56 |



| | |
|---|--------|
| Wing F L, Scratch(es), LI - Repair and paint (complete) | 165,13 |
|---|--------|



| | |
|---|-------|
| Bumper moulding R R, Deformed / Strained, E - Replace | 10,80 |
|---|-------|



Trunk door R L, Scratch(es), Acceptable 0,00

No pictures to display

Door F L, Scratch(es), LI - Repair and paint (complete) 238,76



Door R L, Scratch(es), Acceptable 0,00

No pictures to display

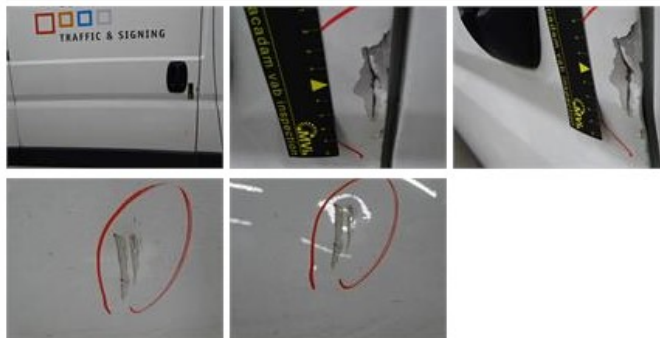
Trunk door panel R, Broken, E - Replace 110,00



Bumper R, Scratch(es), Acceptable 0,00

No pictures to display

Door R R, Dent(s) and scratch(es), LI - Repair and paint (complete) 238,76



Wheel cover F R, Broken, E - Replace 22,50



Sill outer R, Dent(s) and scratch(es), LI - Repair and paint (complete) 232,88



Wheel cover R L, Broken, E - Replace 22,50



Trunk door panel L, Broken, E - Replace 110,00



No pictures to display