



**BMW 3: 1HLR816**

Vinnnumber:	<b>WBA3K11020F834891</b>	Versionname:	<b>3 TOURING 318d 136PK</b>
First Registrationdate:	<b>21/08/2014</b>	Fiscalpower:	
Expertise Mileage:	<b>109297</b>	Power Kw:	<b>100</b>
Bodytype:	<b>Break</b>	Body color:	<b>Dark Grey</b>
Gearbox:	<b>MAN 6 VIT</b>	Paint type:	<b>Metalic</b>
Transmission:	<b>Back</b>	Rims summer:	<b>Aluminium</b>
Fueltype:	<b>Diesel</b>	Oil level:	<b>OK</b>
Battery functioning:	<b>Yes</b>	Parking lot:	<b>3513</b>
Number of doors:	<b>5</b>		
Number of seats:	<b>5</b>		
Number head rests:	<b>5</b>		
Rims summer:	<b>Aluminium</b>		
Category:	<b>Passenger Car</b>		
Oil level:	<b>OK</b>		
Registration Certificate Car (BE):	<b>Yes</b>		

**Options**

Radio CD	Central consol F
Windows electric F	Luggage cover
Windows electric R	Front parking sensors
Cruise Control	Rear parking sensors
Steering wheel multifunctional	
Radio multimedia	
Type of headlighting	<b>Headlighting Xenon</b>
Type of GPS	<b>GPS big screen color</b>
Type of Lining	<b>Lining artificial leather</b>
Type of climate control	<b>Autom climate control</b>

**Limited Technical Inspection**

Airco functioning	<b>OK</b>	Battery functioning	<b>Yes</b>
Tires wear profile	<b>OK</b>	Power steering	<b>Yes</b>
Idle position	<b>OK</b>	Sound engine	<b>OK</b>
Engine startingtime	<b>OK</b>	Clutch test	<b>OK</b>
Exhaust gass	<b>OK</b>	Wiper fluid level	<b>OK</b>
Handbrake	<b>OK</b>	Transmission	<b>OK</b>
		Lighting	<b>OK</b>
		Wiperblades	<b>OK</b>

**Degree of wear**

	<b>225/50/17/94 V LightMetal</b>			
Summer tyres:	Fr.L.	<b>Dunlop: 3 mm</b>	Fr.R.	<b>Dunlop: 3 mm</b>
	Re.L.	<b>Dunlop: 5 mm</b>	Re.R.	<b>Dunlop: 5 mm</b>

**Assistance equipment**

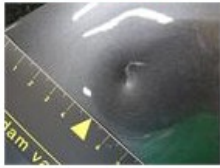
	Runflat	<b>Yes</b>
Total cost ex VAT		<b>1015,35</b>
Door panel F L, Tear, E - Replace		<b>114,00</b>



Door F R, Scratch(es), LI - Repair and paint (complete)	<b>318,35</b>
---	---------------



Wing R R, Dent(s) and scratch(es), LI - Repair and paint (complete) 308,20



Sill outer R, Scratch(es), Acceptable 0,00

No pictures to display

Bumper R, Scratch(es), LI - Repair and paint (complete) 211,80



Tailgate, Dent(s), PDR - Knock out without painting 63,00

