



**FORD Mondeo: 1EXC186**

|                         |                          |              |  |
|-------------------------|--------------------------|--------------|--|
| Vinnnumber:             | <b>WF0GXXGBBGDU06027</b> | Versionname: | <b>MONDEO CLIP Econetic Titanium 115PK</b> |
| First Registrationdate: | <b>11/04/2013</b>        | Fiscalpower: |  |
| Expertise Mileage:      | <b>114573</b>            | Power Kw:    | <b>85</b>                                  |
| Bodytype:               | <b>Break</b>             | Body color:  | <b>Grey</b>                                |
| Gearbox:                | <b>MAN 6 VIT</b>         | Paint type:  | <b>Metalic</b>                             |
| Transmission:           |                          | Rims summer: | <b>Aluminium</b>                           |
| Fueltype:               | <b>Diesel</b>            | Oil level:   | <b>OK</b>                                  |
| Battery functioning:    | <b>Yes</b>               | Parking lot: | <b>2209</b>                                |
| Number of doors:        | <b>5</b>                 |              |  |
| Number of seats:        | <b>5</b>                 |              |  |
| Number head rests:      | <b>5</b>                 |              |  |
| Rims summer:            | <b>Aluminium</b>         |              |  |
| Category:               | <b>Passenger Car</b>     |              |  |
| Oil level:              | <b>OK</b>                |              |  |

**Options**

|                              |                              |                       |                   |
|------------------------------|------------------------------|-----------------------|-------------------|
| Radio CD                     |                              | Sun Roof electric     |                   |
| Windows electric F           |                              | Central consol F      |                   |
| Cruise Control               |                              | Luggage cover         |                   |
| Steering wheel multifunction |                              | Front parking sensors |                   |
| Radio multimedia             |                              | Rear parking sensors  |                   |
| Type of headlighting         | <b>Headlighting Halogen</b>  | Type of Tow bar       | <b>No Tow bar</b> |
| Type of GPS                  | <b>GPS big screen color</b>  |                       |                   |
| Type of Lining               | <b>Lining leather</b>        |                       |                   |
| Type of climate control      | <b>Autom climate control</b> |                       |                   |

**Limited Technical Inspection**

|                     |           |                     |            |
|---------------------|-----------|---------------------|------------|
| Airco functioning   | <b>OK</b> | Battery functioning | <b>Yes</b> |
| Tires wear profile  | <b>OK</b> | Power steering      | <b>Yes</b> |
| Idle position       | <b>OK</b> | Sound engine        | <b>OK</b>  |
| Engine startingtime | <b>OK</b> | Clutch test         | <b>OK</b>  |
| Exhaust gass        | <b>OK</b> | Wiper fluid level   | <b>OK</b>  |
| Handbrake           | <b>OK</b> | Transmission        | <b>OK</b>  |
|                     |           | Lighting            | <b>OK</b>  |
|                     |           | Wiperblades         | <b>OK</b>  |

**Degree of wear**

|               |                                  |                       |       |                       |
|---------------|----------------------------------|-----------------------|-------|-----------------------|
|               | <b>215/55/16/93 H LightMetal</b> |                       |       |                       |
| Summer tyres: | Fr.L.                            | <b>Michelin: 5 mm</b> | Fr.R. | <b>Michelin: 5 mm</b> |
|               | Re.L.                            | <b>Michelin: 5 mm</b> | Re.R. | <b>Michelin: 5 mm</b> |

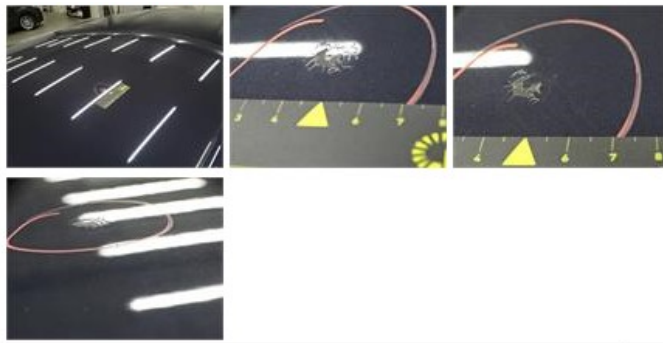
**Assistance equipment**

|             |            |
|-------------|------------|
| Spare wheel | <b>Yes</b> |
|-------------|------------|

|   |         |
|---|---------|
| Total cost ex VAT   | 1966,95 |
| Door F R, Dent(s) and scratch(es), LI - Repair and paint (complete) | 318,35  |



|   |        |
|---|--------|
| Roof, Chemical polution, LI - Repair and paint (complete) | 481,50 |
|---|--------|



Rear window, Scratch(es), E - Replace 370,00



Bumper R, Scratch(es), LI - Repair and paint (complete) 211,80



Front bumper, Scratch(es), LI - Repair and paint (complete) 211,80



Bonnet, Stone chip(s), Acceptable 0,00

No pictures to display

Wing R R, Dent(s), PDR - Knock out without painting 63,00



Alloy rim R R, Scratch(es), Acceptable 0,00

No pictures to display

Wing F L, Scratch(es), Acceptable 0,00

No pictures to display

Sill outer R, Dent(s) and scratch(es), LI - Repair and paint (complete) 310,50



Door R R, Scratch(es), Acceptable 0,00

No pictures to display

Tailgate, Scratch(es), Acceptable 0,00

---

*No pictures to display*