



**MERCEDES C BERLINE: 1KET273**

Vinnumber:	<b>WDD2050361R053692</b>	Versionname:	<b>1.6 C 180 BLUETEC</b>
First Registrationdate:	<b>16/04/2015</b>	Fiscalpower:	
Expertise Mileage:	<b>181803</b>	Power Kw:	<b>85</b>
Bodytype:		Body color:	<b>Black</b>
Gearbox:	<b>MAN 6 VIT</b>	Paint type:	<b>Metalic</b>
Transmission:		Rims summer:	<b>Aluminium</b>
Fueltype:	<b>Diesel</b>	Oil level:	<b>OK</b>
Battery functioning:	<b>Yes</b>	Parking lot:	<b>4331</b>
Number of doors:	<b>4</b>		
Number of seats:	<b>5</b>		
Number head rests:	<b>5</b>		
Rims summer:	<b>Aluminium</b>		
Category:	<b>Passenger Car</b>		
Oil level:	<b>OK</b>		
Registration Certificate Car (BE):	<b>Yes</b>		

**Options**

Radio CD		Central consol F	
Windows electric F		Front parking sensors	
Windows electric R		Rear parking sensors	
Steering wheel multifunctional		Type of Tow bar	<b>No Tow bar</b>
Radio multimedia			
Type of headlighting	<b>Headlighting Halogen</b>		
Type of GPS	<b>GPS big screen color</b>		
Type of Lining	<b>Lining fabrics</b>		
Type of climate control	<b>Autom climate control</b>		

**Limited Technical Inspection**

Airco functioning	<b>OK</b>	Battery functioning	<b>Yes</b>
Tires wear profile	<b>OK</b>	Power steering	<b>Yes</b>
Idle position	<b>OK</b>	Sound engine	<b>OK</b>
Engine startingtime	<b>OK</b>	Clutch test	<b>OK</b>
Exhaust gass	<b>OK</b>	Wiper fluid level	<b>OK</b>
Handbrake	<b>OK</b>	Transmission	<b>OK</b>
		Lighting	<b>OK</b>
		Wiperblades	<b>OK</b>

**Degree of wear**

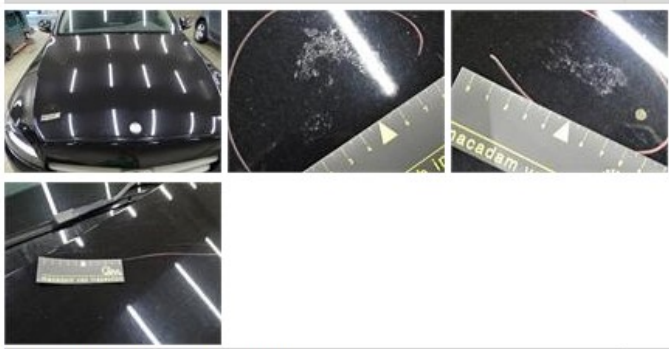
	<b>205/60/16/92 V LightMetal</b>			
Summer tyres:	Fr.L.	<b>Continental: 7 mm</b>	Fr.R.	<b>Continental: 7 mm</b>
	Re.L.	<b>Continental: 5 mm</b>	Re.R.	<b>Continental: 5 mm</b>

**Assistance equipment**

Repair kit	<b>Yes</b>	Compressor	<b>Yes</b>
------------	------------	------------	------------

Total cost ex VAT	<b>1089,93</b>
-------------------	----------------


Bonnet, Chemical polution, LI - Repair and paint (complete)	<b>290,08</b>
---	---------------



Door F R, Scratch(es), Acceptable	<b>0,00</b>
-----------------------------------	-------------

No pictures to display	
------------------------	--

Bumper R, Scratch(es), Acceptable	<b>0,00</b>
-----------------------------------	-------------

Bumper R, Scratch(es), Acceptable	0,00
<i>No pictures to display</i>	
Door R R, Scratch(es), Acceptable	0,00
<i>No pictures to display</i>	
Roof, Chemical pollution, LI - Repair and paint (complete)	481,50
	
Alloy rim R R, Scratch(es), Acceptable	0,00
<i>No pictures to display</i>	
Door R L, Dent(s) and scratch(es), LI - Repair and paint (complete)	318,35
