



PEUGEOT Partner: 1DPG120

Vinnumber:	VF37A9HN0CN523234	Versionname:	PARTNER B/F L1H1 Conf.120 75PK
First Registrationdate:	12/07/2012	Fiscalpower:	
Expertise Mileage:	96462	Power Kw:	55
Bodytype:	Transporter	Body color:	White
Gearbox:	MAN 5 VIT	Paint type:	Metalic
Transmission:		Rims summer:	Steel
Fueltype:	Diesel	Oil level:	OK
Battery functioning:	Yes	Parking lot:	3824
Number of doors:	5		
Number of seats:	2		
Number head rests:	2		
Rims summer:	Steel		
Category:	Light Commercial Vehicle		
Oil level:	OK		

Options

Radio CD	Type of Tow bar	Tow bar fixed
Windows electric F		
Type of headlighting	Headlighting Halogen	
Type of GPS	No GPS	
Type of Lining	Lining fabrics	
Type of climate control	Manual climate control	

Limited Technical Inspection

Airco functioning	OK	Battery functioning	Yes
Tires wear profile	OK	Power steering	Yes
Idle position	OK	Sound engine	OK
Engine startingtime	OK	Clutch test	OK
Exhaust gass	OK	Wiper fluid level	OK
Handbrake	OK	Transmission	OK
		Lighting	OK
		Wiperblades	OK

Degree of wear

	195/65/15/91 H Steel			
Summer tyres:	Fr.L.	Michelin: 3 mm	Fr.R.	Michelin: 3 mm
	Re.L.	Michelin: 4 mm	Re.R.	Michelin: 4 mm

Assistance equipment

Spare wheel	Yes
Total cost ex VAT	1614,89
Roof, Chemical polution, LI - Repair and paint (complete)	361,13

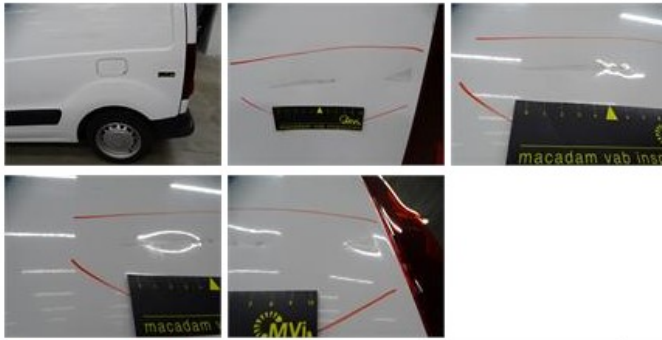


Sill outer R, Dent(s) and scratch(es), LI - Repair and paint (complete) **232,88**





Wing R L, Dent(s) and scratch(es), LI - Repair and paint (complete) 231,15



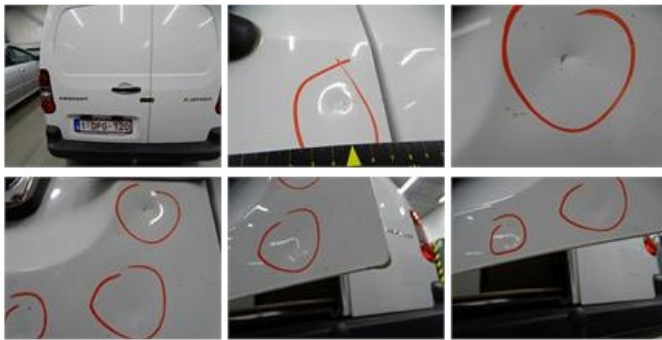
Maintenance book, Missing, E - Replace 0,00

No pictures to display

Wing F L, Dent(s), LI - Repair and paint (complete) 165,13



Trunk door R L, Dent(s) and scratch(es), It - Spot repair 115,56



Front bumper, Dent(s), E - Replace 398,40



Rearview mirror housing R, Scratch(es), Smart repair 110,64

