



**PEUGEOT 508: 1FBT075**

|                         |                          |              |                                      |
|-------------------------|--------------------------|--------------|--------------------------------------|
| Vinnumber:              | <b>VF38URHC8DL020330</b> | Versionname: | <b>508 SW RXH BMP STT 163PK Aut.</b> |
| First Registrationdate: | <b>17/05/2013</b>        | Fiscalpower: |                                      |
| Expertise Mileage:      | <b>124611</b>            | Power Kw:    | <b>120</b>                           |
| Bodytype:               | <b>Break</b>             | Body color:  | <b>Dark Grey</b>                     |
| Gearbox:                | <b>Automatic</b>         | Paint type:  | <b>Metalic</b>                       |
| Transmission:           | <b>Front</b>             | Rims summer: | <b>Aluminium</b>                     |
| Fueltype:               | <b>Hybrid Diesel</b>     | Oil level:   | <b>OK</b>                            |
| Battery functioning:    | <b>Yes</b>               | Parking lot: | <b>4220</b>                          |
| Number of doors:        | <b>5</b>                 |              |                                      |
| Number of seats:        | <b>5</b>                 |              |                                      |
| Number head rests:      | <b>5</b>                 |              |                                      |
| Rims summer:            | <b>Aluminium</b>         |              |                                      |
| Category:               | <b>Passenger Car</b>     |              |                                      |
| Oil level:              | <b>OK</b>                |              |                                      |

**Options**

|                              |                              |                          |
|------------------------------|------------------------------|--------------------------|
| Radio CD                     | Seats electric F L           |                          |
| Windows electric F           | Seats electric F R           |                          |
| Windows electric R           | Panoramic roof               |                          |
| Cruise Control               | Central consol F             |                          |
| Steering wheel multifunction | Luggage cover                |                          |
| Seats F heated               | Front parking sensors        |                          |
| Radio multimedia             | Rear parking sensors         |                          |
| Type of headlighting         | Type of Tow bar              | <b>Tow bar removable</b> |
| Type of GPS                  | <b>Headlighting Halogen</b>  |                          |
| Type of Lining               | <b>GPS big screen color</b>  |                          |
| Type of climate control      | <b>Lining semi-leather</b>   |                          |
| Head-up Display              | <b>Autom climate control</b> |                          |

**Limited Technical Inspection**

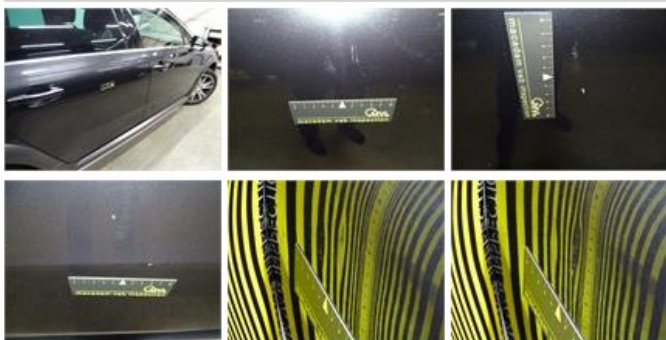
|                     |           |                     |            |
|---------------------|-----------|---------------------|------------|
| Airco functioning   | <b>OK</b> | Battery functioning | <b>Yes</b> |
| Tires wear profile  | <b>OK</b> | Power steering      | <b>Yes</b> |
| Idle position       | <b>OK</b> | Sound engine        | <b>OK</b>  |
| Engine startingtime | <b>OK</b> | Clutch test         | <b>OK</b>  |
| Exhaust gass        | <b>OK</b> | Wiper fluid level   | <b>OK</b>  |
| Handbrake           | <b>OK</b> | Transmission        | <b>OK</b>  |
|                     |           | Lighting            | <b>OK</b>  |
|                     |           | Wiperblades         | <b>OK</b>  |

**Degree of wear**

|               |                                   |                        |       |                        |
|---------------|-----------------------------------|------------------------|-------|------------------------|
|               | <b>245/45/18/100 V LightMetal</b> |                        |       |                        |
| Summer tyres: | Fr.L.                             | <b>Firestone: 4 mm</b> | Fr.R. | <b>Firestone: 4 mm</b> |
|               | Re.L.                             | <b>Firestone: 5 mm</b> | Re.R. | <b>Firestone: 5 mm</b> |

**Assistance equipment**

|   |         |
|---|---------|
| Total cost ex VAT   | 2158,64 |
| Door R R, Dent(s) and scratch(es), LI - Repair and paint (complete) | 382,02  |



|   |        |
|---|--------|
| Door F R, Dent(s) and scratch(es), LI - Repair and paint (complete) | 382,02 |
|---|--------|



Alloy rim F R polished, Scratch(es), LI - Repair and paint (complete) 95,00



Door F L, Scratch(es), LI - Repair and paint (complete) 382,02



Alloy rim R R polished, Rust, Acceptable 0,00

No pictures to display

Bumper R, Scratch(es), Acceptable 0,00

No pictures to display

Door R L, Scratch(es), LI - Repair and paint (complete) 382,02



Rear window, Scratch(es), E - Replace 420,00



Wing R R, Scratch(es), It - Spot repair 115,56



Alloy rim F L polished, Scratch(es), Acceptable 0,00

No pictures to display