



VOLKSWAGEN Golf: 1FSY378

| | | | |
|------------------------------------|--------------------------|--------------|---------------------------------|
| Vinnnumber: | WVWZZZAUZEW114975 | Versionname: | GOLF BER Trendline 105PK |
| First Registrationdate: | 15/10/2013 | Fiscalpower: | |
| Expertise Mileage: | 80844 | Power Kw: | 77 |
| Bodytype: | Hatchback | Body color: | Blue |
| Gearbox: | MAN 5 VIT | Paint type: | Metalic |
| Transmission: | Front | Rims summer: | Steel |
| Fueltype: | Diesel | Oil level: | OK |
| Battery functioning: | Yes | Parking lot: | 3819 |
| Number of doors: | 5 | | |
| Number of seats: | 5 | | |
| Number head rests: | 5 | | |
| Rims summer: | Steel | | |
| Category: | Passenger Car | | |
| Oil level: | OK | | |
| Registration Certificate Car (BE): | Yes | | |

Options

| | |
|--------------------------------|------------------------------|
| Windows electric F | Sun Roof electric |
| Windows electric R | Central consol F |
| Cruise Control | Luggage cover |
| Steering wheel multifunctional | Front parking sensors |
| Radio multimedia | Rear parking sensors |
| Type of headlighting | Headlighting Halogen |
| Type of GPS | GPS big screen color |
| Type of Lining | Lining fabrics |
| Type of climate control | Autom climate control |
| Adaptive cruise control | |

Limited Technical Inspection

| | | | |
|---------------------|-----------|---------------------|------------|
| Airco functioning | OK | Battery functioning | Yes |
| Tires wear profile | OK | Power steering | Yes |
| Idle position | OK | Sound engine | OK |
| Engine startingtime | OK | Clutch test | OK |
| Exhaust gass | OK | Wiper fluid level | OK |
| Handbrake | OK | Transmission | OK |
| | | Lighting | OK |
| | | Wiperblades | OK |

Degree of wear

| | | | | |
|---------------|-----------------------------|--------------------------|-------|--------------------------|
| | 195/65/15/91 H Steel | | | |
| Summer tyres: | Fr.L. | Continental: 4 mm | Fr.R. | Continental: 4 mm |
| | Re.L. | Continental: 5 mm | Re.R. | Continental: 5 mm |

Assistance equipment

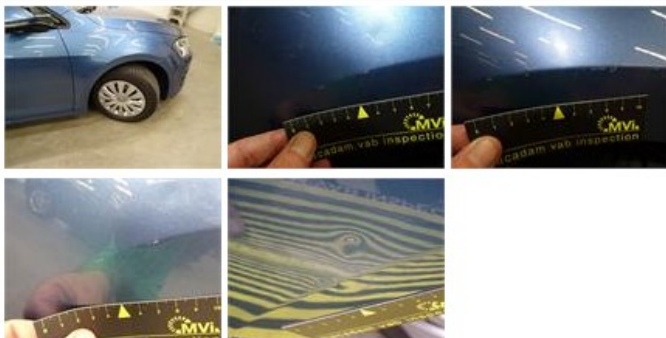
| | | | |
|-----------------------|------------|------|------------|
| Emergency spare wheel | Yes | Jack | Yes |
|-----------------------|------------|------|------------|

Total cost ex VAT

| | |
|--|---------------|
| | 220,18 |
|--|---------------|


Wing F R, Scratch(es), LI - Repair and paint (complete)

| | |
|--|---------------|
| | 220,18 |
|--|---------------|



Bumper R, Scratch(es), Acceptable

| | |
|--|-------------|
| | 0,00 |
|--|-------------|

| | |
|---|------|
| Tailgate, Dent(s), Acceptable | 0,00 |
| <i>No pictures to display</i> | |
| Wheel cover F R, Scratch(es), Acceptable | 0,00 |
| <i>No pictures to display</i> | |
| Door R L, Dent(s), Acceptable | 0,00 |
| <i>No pictures to display</i> | |
| Door R R, Bad repair, Acceptable | 0,00 |
|  | |
| Door F R, Scratch(es), Acceptable | 0,00 |
| <i>No pictures to display</i> | |
| Bonnet, Scratch(es), Acceptable | 0,00 |
| <i>No pictures to display</i> | |