



| VOLKSWAGEN Golf: 1EAK201 | | | |
|--------------------------|--------------------------|--------------|--------------------------------|
| Vinnnumber: | WVWZZZ1KZDW093208 | Versionname: | GOLF BER BlueMotion DPF |
| First Registrationdate: | 3/10/2012 | Fiscalpower: | 105PK |
| Expertise Mileage: | 48305 | Power Kw: | 77 |
| Bodytype: | | Body color: | Silver |
| Gearbox: | MAN 5 VIT | Paint type: | Metalic |
| Transmission: | | Rims summer: | Aluminium |
| Fueltype: | Diesel | Oil level: | OK |
| Battery functioning: | Yes | Parking lot: | 1106 |
| Number of doors: | 5 | | |
| Number of seats: | 5 | | |
| Number head rests: | 5 | | |
| Rims summer: | Aluminium | | |
| Category: | Passenger Car | | |
| Oil level: | OK | | |

| Options | | | |
|--------------------------------|------------------------------|------------------|-------------------|
| Radio CD | | Central consol F | |
| Windows electric F | | Luggage cover | |
| Cruise Control | | Type of Tow bar | No Tow bar |
| Steering wheel multifunctional | | | |
| Type of headlighting | Headlighting Halogen | | |
| Type of GPS | GPS big screen color | | |
| Type of Lining | Lining fabrics | | |
| Type of climate control | Autom climate control | | |

| Limited Technical Inspection | | | |
|------------------------------|-----------|---------------------|------------|
| Airco functioning | OK | Battery functioning | Yes |
| Tires wear profile | OK | Power steering | Yes |
| Idle position | OK | Sound engine | OK |
| Engine startingtime | OK | Clutch test | OK |
| Exhaust gass | OK | Wiper fluid level | OK |
| Handbrake | OK | Transmission | OK |
| | | Lighting | OK |
| | | Wiperblades | OK |

| Degree of wear | | | | |
|----------------|----------------------------------|-----------------------|-------|-----------------------|
| | 195/65/15/91 H LightMetal | | | |
| Summer tyres: | Fr.L. | Goodyear: 4 mm | Fr.R. | Goodyear: 4 mm |
| | Re.L. | Goodyear: 6 mm | Re.R. | Goodyear: 6 mm |

| Assistance equipment | | | |
|----------------------|------------|------------|------------|
| Repair kit | Yes | Compressor | Yes |

| | |
|-----------------------------------|----------------|
| Total cost ex VAT | 2155,68 |
| Door R R, Scratch(es), Acceptable | 0,00 |

| | |
|--|---------------|
| <i>No pictures to display</i> | |
| Rearview mirror R complete, Broken, Le - Replace and paint | 283,00 |



| | |
|-----------------------------------|-------------|
| <i>No pictures to display</i> | |
| Door F L, Scratch(es), Acceptable | 0,00 |

| | |
|-------------------------------|--|
| <i>No pictures to display</i> | |
|-------------------------------|--|

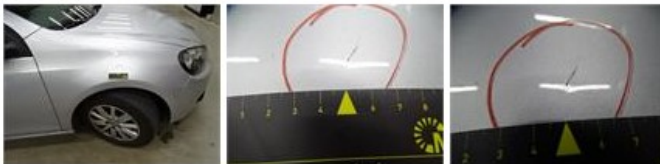
Wing R L, Dent(s) and scratch(es), LI - Repair and paint (complete) 308,20



Bumper R, Dent(s) and scratch(es), Le - Replace and paint 651,00



Wing F R, Dent(s) and scratch(es), LI - Repair and paint (complete) 220,18



Tailgate, Scratch(es), Acceptable 0,00

No pictures to display

Roof, Dent(s) and scratch(es), LI - Repair and paint (complete) 481,50



Front bumper, Scratch(es), LI - Repair and paint (complete) 211,80

