



**TOYOTA Verso: 1GTA552**

Vinnnumber:	<b>NMTDM26R80R003943</b>	Versionname:	<b>VERSO Skyview 7pl.112PK</b>
First Registrationdate:	<b>22/04/2014</b>	Fiscalpower:	
Expertise Mileage:	<b>48782</b>	Power Kw:	<b>82</b>
Bodytype:	<b>MPV</b>	Body color:	<b>Brown</b>
Gearbox:	<b>MAN 6 VIT</b>	Paint type:	<b>Metalic</b>
Transmission:		Rims summer:	<b>Aluminium</b>
Fueltype:	<b>Diesel</b>	Oil level:	<b>OK</b>
Battery functioning:	<b>Yes</b>	Parking lot:	<b>2705</b>
Number of doors:	<b>5</b>		
Number of seats:	<b>7</b>		
Number head rests:	<b>7</b>		
Rims summer:	<b>Aluminium</b>		
Category:	<b>Passenger Car</b>		
Oil level:	<b>OK</b>		
Registration Certificate Car (BE):	<b>Yes</b>		

**Options**

Radio CD		Panoramic roof	
Windows electric F		Central consol F	
Windows electric R		Luggage cover	
Cruise Control		Type of Tow bar	<b>No Tow bar</b>
Steering wheel multifunctional			
Seats F heated			
Type of headlighting	<b>Headlighting Halogen</b>		
Type of GPS	<b>GPS big screen color</b>		
Type of Lining	<b>Lining fabrics</b>		
Type of climate control	<b>Autom climate control</b>		

**Limited Technical Inspection**

Airco functioning	<b>OK</b>	Battery functioning	<b>Yes</b>
Tires wear profile	<b>OK</b>	Power steering	<b>Yes</b>
Idle position	<b>OK</b>	Sound engine	<b>OK</b>
Engine startingtime	<b>OK</b>	Clutch test	<b>OK</b>
Exhaust gass	<b>OK</b>	Wiper fluid level	<b>OK</b>
Handbrake	<b>OK</b>	Transmission	<b>OK</b>
		Lighting	<b>OK</b>
		Wiperblades	<b>OK</b>

**Degree of wear**

	<b>205/60/16/92 V LightMetal</b>			
Summer tyres:	Fr.L.	<b>Bridgestone: 6 mm</b>	Fr.R.	<b>Bridgestone: 6 mm</b>
	Re.L.	<b>Bridgestone: 6 mm</b>	Re.R.	<b>Bridgestone: 6 mm</b>

**Assistance equipment**

Total cost ex VAT	2384,23
Alloy rim F L, Scratch(es), LI - Repair and paint (complete)	95,00



Door R L, Scratch(es), LI - Repair and paint (complete)	318,35
---	--------





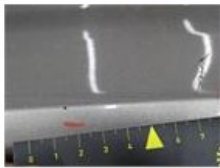
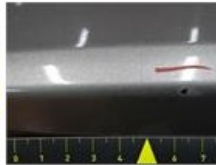
Door F L, Scratch(es), LI - Repair and paint (complete) 318,35



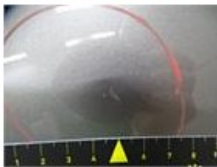
Door F R, Scratch(es), Acceptable 0,00

No pictures to display

Bumper R, Scratch(es), LI - Repair and paint (complete) 211,80



Wing F R, Dent(s) and scratch(es), LI - Repair and paint (complete) 220,18



Front bumper, Scratch(es), LI - Repair and paint (complete) 211,80



Wing F L, Dent(s), Acceptable 0,00

No pictures to display

Door R R, Scratch(es), LI - Repair and paint (complete) 318,35



Wing R R, Dent(s) and scratch(es), LI - Repair and paint (complete) 308,20



Protection plate M, Tear, E - Replace 74,00



Alloy rim F R, Scratch(es), Acceptable	0,00
--	------

No pictures to display

Wing R L, Scratch(es), LI - Repair and paint (complete)	308,20
---	--------

