



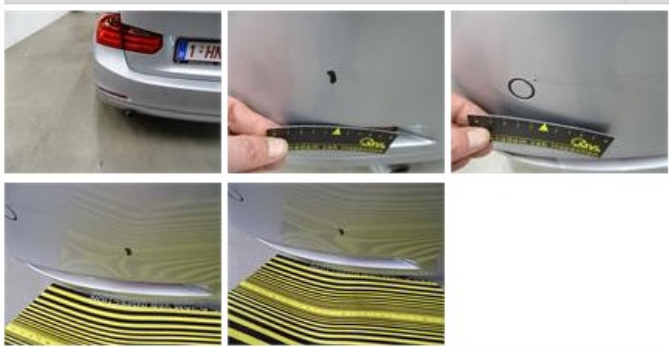
<b>BMW 3: 1HNL163</b>			
Vinnumber:	<b>WBA3D110X0P700134</b>	Versionname:	<b>3 BER 318d 136PK</b>
First Registrationdate:	<b>28/08/2014</b>	Fiscalpower:	
Expertise Mileage:	<b>123711</b>	Power Kw:	<b>100</b>
Bodytype:	<b>Berline</b>	Body color:	<b>Silver</b>
Gearbox:	<b>MAN 6 VIT</b>	Paint type:	<b>Metalic</b>
Transmission:	<b>Back</b>	Rims summer:	<b>Aluminium</b>
Fueltype:	<b>Diesel</b>	Oil level:	<b>OK</b>
Battery functioning:	<b>Yes</b>	Parking lot:	<b>3408</b>
Number of doors:	<b>4</b>		
Number of seats:	<b>5</b>		
Number head rests:	<b>5</b>		
Rims summer:	<b>Aluminium</b>		
Category:	<b>Passenger Car</b>		
Oil level:	<b>OK</b>		
Registration Certificate Car (BE):	<b>Yes</b>		

<b>Options</b>	
Radio CD	Central consol F
Windows electric F	Rear parking sensors
Windows electric R	
Cruise Control	
Steering wheel multifunctional	
Radio multimedia	
Type of headlighting	<b>Headlighting Halogen</b>
Type of GPS	<b>GPS big screen color</b>
Type of Lining	<b>Lining fabrics</b>
Type of climate control	<b>Autom climate control</b>

<b>Limited Technical Inspection</b>			
Airco functioning	<b>OK</b>	Battery functioning	<b>Yes</b>
Tires wear profile	<b>OK</b>	Power steering	<b>Yes</b>
Idle position	<b>OK</b>	Sound engine	<b>OK</b>
Engine startingtime	<b>OK</b>	Clutch test	<b>OK</b>
Exhaust gass	<b>OK</b>	Wiper fluid level	<b>OK</b>
Handbrake	<b>OK</b>	Transmission	<b>OK</b>
		Lighting	<b>OK</b>
		Wiperblades	<b>OK</b>

<b>Degree of wear</b>				
	<b>225/50/17/94 W LightMetal</b>			
Summer tyres:	Fr.L.	<b>Bridgestone: 6 mm</b>	Fr.R.	<b>Bridgestone: 6 mm</b>
	Re.L.	<b>Bridgestone: 7 mm</b>	Re.R.	<b>Bridgestone: 7 mm</b>

<b>Assistance equipment</b>	
	<b>Runflat</b>
	<b>Yes</b>
<b>Total cost ex VAT</b>	<b>211,80</b>
<b>Bumper R, Dent(s) and scratch(es), LI - Repair and paint (complete)</b>	<b>211,80</b>



<b>Wing F R, Repaired, Acceptable</b>	<b>0,00</b>
---------------------------------------	-------------

Door F R, Repaired, Acceptable

0,00

*No pictures to display*