



**BMW X3: 1FOD474**

Vinnumber:	<b>WBAWY110300C57161</b>	Versionname:	<b>X3 sDrive18 136PK</b>
First Registrationdate:	<b>4/09/2013</b>	Fiscalpower:	
Expertise Mileage:	<b>103323</b>	Power Kw:	<b>100</b>
Bodytype:		Body color:	<b>Grey</b>
Gearbox:	<b>MAN 6 VIT</b>	Paint type:	<b>Metalic</b>
Transmission:	<b>Back</b>	Rims summer:	<b>Aluminium</b>
Fueltype:	<b>Diesel</b>	Oil level:	<b>OK</b>
Maintenance:	<b>OVER 23000KM</b>	Parking lot:	<b>3215</b>
Maintenance:	<b>OK</b>		
Battery functioning:	<b>Yes</b>		
Number of doors:	<b>5</b>		
Number of seats:	<b>5</b>		
Number head rests:	<b>5</b>		
Rims summer:	<b>Aluminium</b>		
Category:	<b>Passenger Car</b>		
Oil level:	<b>OK</b>		
Registration Certificate Car (BE):	<b>Yes</b>		

**Options**

Radio CD		Central consol F	
GPS storage	<b>HD</b>	Luggage cover	
Windows electric F		Rear parking sensors	
Windows electric R			
Cruise Control			
Steering wheel multifunctional			
Type of headlighting	<b>Headlighting Halogen</b>		
Type of GPS	<b>GPS big screen color</b>		
Type of Lining	<b>Lining artificial leather</b>		
Type of climate control	<b>Autom climate control</b>		

**Limited Technical Inspection**

Airco functioning	<b>OK</b>	Battery functioning	<b>Yes</b>
Tires wear profile	<b>OK</b>	Power steering	<b>Yes</b>
Idle position	<b>OK</b>	Sound engine	<b>OK</b>
Engine startingtime	<b>OK</b>	Clutch test	<b>OK</b>
Exhaust gass	<b>OK</b>	Wiper fluid level	<b>OK</b>
Handbrake	<b>OK</b>	Transmission	<b>OK</b>
		Lighting	<b>OK</b>
		Wiperblades	<b>OK</b>

**Degree of wear**

	<b>225/60/17/99 V LightMetal</b>			
Summer tyres:	Fr.L.	<b>Uniroyal: 5 mm</b>	Fr.R.	<b>Uniroyal: 5 mm</b>
	Re.L.	<b>Uniroyal: 5 mm</b>	Re.R.	<b>Uniroyal: 5 mm</b>

**Assistance equipment**

Repair kit	<b>Yes</b>	Compressor	<b>Yes</b>
------------	------------	------------	------------

Total cost ex VAT	<b>178,56</b>
-------------------	---------------

Door R L, Dent(s), Acceptable	<b>0,00</b>
-------------------------------	-------------



Door F L, Repaired, P - Check	<b>0,00</b>
-------------------------------	-------------



Door R R, Dent(s), Acceptable

0,00



Door F L, Dent(s), PDR - Knock out without painting

63,00



Bumper R, Scratch(es), Acceptable

0,00



Door F L, Dent(s), Acceptable

0,00



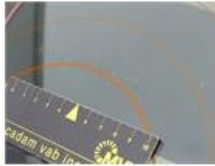
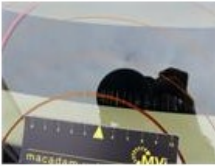
Steering wheel, Worn, Acceptable

0,00



Rear window, Scratch(es), E - Replace

0,00



Seat cover F L, Tear, Acceptable

0,00



Door R L, Repaired, P - Check

0,00



Door F R, Dent(s), Acceptable

0,00



Step L, Scratch(es), Acceptable

0,00



Bumper F R, Dent(s) and scratch(es), It - Spot repair

115,56



Alloy rim F L, Scratch(es), Acceptable

0,00

