



| | | | |
|-------------------------|--------------------------|--------------|-----------------------------|
| BMW 3: 1FML884 | | | |
| Vinnumber: | WBA3K11000F826496 | Versionname: | 3 TOURING 318d 136PK |
| First Registrationdate: | 20/08/2013 | Fiscalpower: | |
| Expertise Mileage: | 199177 | Power Kw: | 100 |
| Bodytype: | Break | Body color: | Grey |
| Gearbox: | MAN 6 VIT | Paint type: | Metalic |
| Transmission: | | Rims summer: | Aluminium |
| Fueltype: | Diesel | Oil level: | OK |
| Battery functioning: | Yes | Parking lot: | 2615 |
| Number of doors: | 5 | | |
| Number of seats: | 5 | | |
| Number head rests: | 5 | | |
| Rims summer: | Aluminium | | |
| Category: | Passenger Car | | |
| Oil level: | OK | | |

| | | | |
|--------------------------------|------------------------------|----------------------|-------------------|
| Options | | | |
| Radio CD | | Central consol F | |
| Windows electric F | | Luggage cover | |
| Windows electric R | | Rear parking sensors | |
| Cruise Control | | Type of Tow bar | No Tow bar |
| Steering wheel multifunctional | | | |
| Radio multimedia | | | |
| Type of headlighting | Headlighting Halogen | | |
| Type of GPS | GPS big screen color | | |
| Type of Lining | Lining fabrics | | |
| Type of climate control | Autom climate control | | |

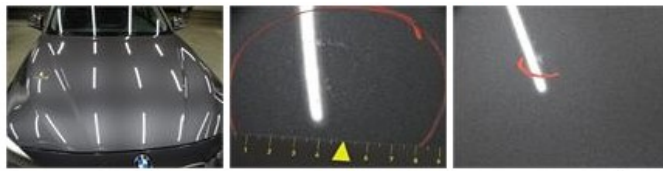
| | | | |
|-------------------------------------|-----------|---------------------|------------|
| Limited Technical Inspection | | | |
| Airco functioning | OK | Battery functioning | Yes |
| Tires wear profile | OK | Power steering | Yes |
| Idle position | OK | Sound engine | OK |
| Engine startingtime | OK | Clutch test | OK |
| Exhaust gass | OK | Wiper fluid level | OK |
| Handbrake | OK | Transmission | OK |
| | | Lighting | OK |
| | | Wiperblades | OK |

| | | | | |
|-----------------------|----------------------------------|--------------------------|-------|--------------------------|
| Degree of wear | | | | |
| | 205/60/16/92 W LightMetal | | | |
| Summer tyres: | Fr.L. | Michelin: 5 mm | Fr.R. | Michelin: 5 mm |
| | Re.L. | Bridgestone: 3 mm | Re.R. | Bridgestone: 3 mm |

| | | | |
|----------------------------------|-----------|------------|----------------|
| Assistance equipment | | | |
| Repair kit | No | Compressor | Yes |
| Total cost ex VAT | | | 1151,11 |
| Wing R L, Bad repair, Acceptable | | | 0,00 |



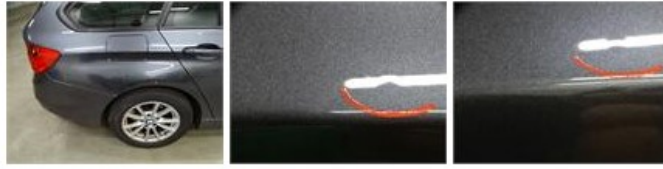
| | |
|---|---------------|
| Bonnet, Chemical polution, LI - Repair and paint (complete) | 290,08 |
|---|---------------|



Door R L, Bad repair, Acceptable 0,00



Wing R R, Bad repair, Acceptable 0,00



Door R R, Dent(s), Acceptable 0,00

No pictures to display

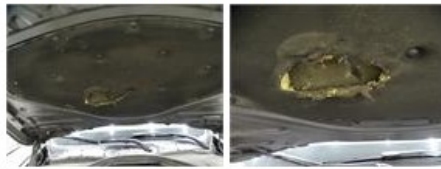
Alloy rim F R, Scratch(es), Acceptable 0,00

No pictures to display

Alloy rim R R, Scratch(es), LI - Repair and paint (complete) 95,00



Protection plate M, Tear, E - Replace 74,00



Front bumper, Bad repair, Acceptable 0,00



Door F R, Scratch(es), Acceptable 0,00

No pictures to display

Tyre repair kit, Missing, E - Replace 210,53



Bumper R, Bad repair, Acceptable 0,00



Paint Chip(s) on front of Bumper, Bad repair, Acceptable 120,50

