


**FORD S Max: 1HNU869**

Vinnumber:	<b>WF0SXXGBWSEU69134</b>	Versionname:	<b>S-MAX Titanium Style St/St DPF 115PK</b>
First Registrationdate:	<b>1/09/2014</b>	Fiscalpower:	
Expertise Mileage:	<b>44542</b>	Power Kw:	<b>85</b>
Bodytype:	<b>MPV</b>	Body color:	<b>Brown</b>
Gearbox:	<b>MAN 6 VIT</b>	Paint type:	<b>Metalic</b>
Transmission:		Rims summer:	<b>Aluminium</b>
Fueltype:	<b>Diesel</b>	Oil level:	<b>OK</b>
Battery functioning:	<b>Yes</b>	Parking lot:	<b>2511</b>
Number of doors:	<b>5</b>		
Number of seats:	<b>7</b>		
Number head rests:	<b>7</b>		
Rims summer:	<b>Aluminium</b>		
Category:	<b>Passenger Car</b>		
Oil level:	<b>OK</b>		
Registration Certificate Car (BE):	<b>Yes</b>		

**Options**

Radio CD		Seats electric F L	
Windows electric F		Seats electric F R	
Windows electric R		Panoramic roof	
Cruise Control		Central consol F	
Steering wheel multifunctional		Luggage cover	
Seats F heated		Front parking sensors	
Radio multimedia		Rear parking sensors	
Type of headlighting:	<b>Headlighting Halogen</b>	Type of Tow bar:	<b>No Tow bar</b>
Type of GPS:	<b>GPS big screen color</b>		
Type of Lining:	<b>Lining leather</b>		
Type of climate control:	<b>Autom climate control</b>		

**Limited Technical Inspection**

Airco functioning	<b>OK</b>	Battery functioning	<b>Yes</b>
Tires wear profile	<b>OK</b>	Power steering	<b>Yes</b>
Idle position	<b>OK</b>	Sound engine	<b>OK</b>
Engine startingtime	<b>OK</b>	Clutch test	<b>OK</b>
Exhaust gass	<b>OK</b>	Wiper fluid level	<b>OK</b>
Handbrake	<b>OK</b>	Transmission	<b>OK</b>
		Lighting	<b>OK</b>
		Wiperblades	<b>OK</b>

**Degree of wear**

<b>225/50/17/98 W LightMetal</b>				
Summer tyres:	Fr.L.	<b>Michelin: 4 mm</b>	Fr.R.	<b>Michelin: 4 mm</b>
	Re.L.	<b>Michelin: 7 mm</b>	Re.R.	<b>Michelin: 7 mm</b>

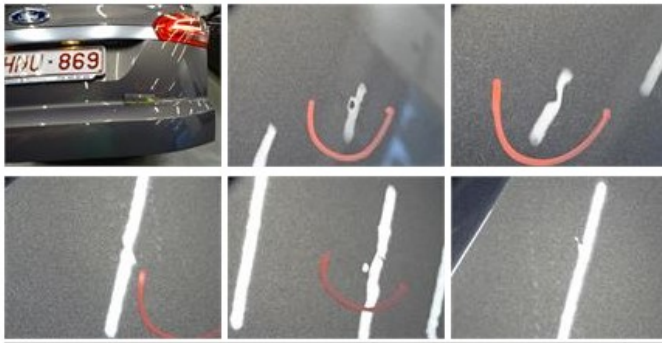
**Assistance equipment**

Repair kit	<b>Yes</b>	Compressor	<b>Yes</b>
------------	------------	------------	------------

**Total cost ex VAT** 474,77

**Alloy rim F L, Scratch(es), LI - Repair and paint (complete)** 95,00

**Tailgate, Bad repair, Acceptable**
**0,00**



Wing F R, Dent(s) and scratch(es), LI - Repair and paint (complete) 264,21



Front bumper, Scratch(es), It - Spot repair 115,56

