



**RENAULT Kangoo Express: 1EUM055**

Vinnnumber:	<b>VF1FW15H548657351</b>	Versionname:	<b>KANGOO EXPR.B/F MAXI Gr.Confort FAP 90PK</b>
First Registrationdate:	<b>25/03/2013</b>	Fiscalpower:	
Expertise Mileage:	<b>154901</b>	Power Kw:	<b>66</b>
Bodytype:	<b>Transporter</b>	Body color:	<b>Grey</b>
Gearbox:	<b>MAN 5 VIT</b>	Paint type:	<b>Metalic</b>
Transmission:	<b>Front</b>	Rims summer:	<b>Steel</b>
Fueltype:	<b>Diesel</b>	Oil level:	<b>OK</b>
Battery functioning:	<b>Yes</b>	Parking lot:	<b>1120</b>
Number of doors:	<b>5</b>		
Number of seats:	<b>2</b>		
Number head rests:	<b>2</b>		
Rims summer:	<b>Steel</b>		
Category:	<b>Light Commercial Vehicle</b>		
Oil level:	<b>OK</b>		

**Options**

Radio CD		Front parking sensors	
Windows electric F		Rear parking sensors	
Radio multimedia		Type of Tow bar	<b>Tow bar fixed</b>
Type of headlighting	<b>Headlighting Halogen</b>		
Type of GPS	<b>No GPS</b>		
Type of Lining	<b>Lining fabrics</b>		
Type of climate control	<b>Manual climate control</b>		

**Limited Technical Inspection**

Airco functioning	<b>OK</b>	Battery functioning	<b>Yes</b>
Tires wear profile	<b>OK</b>	Power steering	<b>Yes</b>
Idle position	<b>OK</b>	Sound engine	<b>OK</b>
Engine startingtime	<b>OK</b>	Clutch test	<b>OK</b>
Exhaust gass	<b>OK</b>	Wiper fluid level	<b>OK</b>
Handbrake	<b>OK</b>	Transmission	<b>OK</b>
		Lighting	<b>OK</b>
		Wiperblades	<b>OK</b>

**Degree of wear**

	<b>195/65/15/91 X Steel</b>			
Summer tyres:	Fr.L.	<b>Kleber: 4 mm</b>	Fr.R.	<b>Kleber: 4 mm</b>
	Re.L.	<b>Kleber: 5 mm</b>	Re.R.	<b>Kleber: 5 mm</b>

**Assistance equipment**

Emergency spare wheel	<b>Yes</b>	Jack	<b>Yes</b>
-----------------------	------------	------	------------

Total cost ex VAT	1674,12
Roof pillar L, Bad repair, Acceptable	0,00



Bumper R, Dent(s), Smart repair	110,64
---------------------------------	--------



Wing R L, Scratch(es), LI - Repair and paint (complete)	231,15
---	--------



Roof, Dent(s), LI - Repair and paint (complete) 361,13



Door F R, Dent(s) and scratch(es), LI - Repair and paint (complete) 382,76



Front bumper, Scratch(es), Acceptable 0,00

No pictures to display

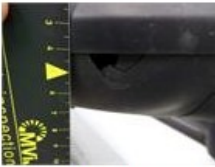
Reflector, Crack, E - Replace 64,00



Bodywork, Not original part, Acceptable 0,00

No pictures to display

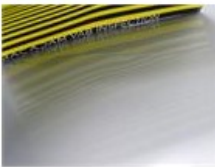
Rearview mirror housing R, Broken, E - Replace 74,00



Sill outer R, Dent(s) and scratch(es), LI - Repair and paint (complete) 232,88



Bonnet, Dent(s), LI - Repair and paint (complete) 217,56



Windscreen, Scratch(es), Acceptable 0,00

No pictures to display