


SKODA OCTAVIA COMBI: 1LGZ907

Vinnumber:	TMBJG7NE4G0045336	Versionname:	1.6 CRTDI 81KW GREENLINE AMBITION
First Registrationdate:	25/09/2015	Fiscalpower:	
Expertise Mileage:	184262	Power Kw:	81
Bodytype:	Break	Body color:	Dark Blue
Gearbox:	MAN 6 VIT	Paint type:	Metalic
Transmission:	Front	Rims summer:	Steel
Fueltype:	Diesel	Oil level:	OK
Battery functioning:	Yes	Parking lot:	3828
Number of doors:	5		
Number of seats:	5		
Number head rests:	5		
Rims summer:	Steel		
Category:	Passenger Car		
Oil level:	OK		
Registration Certificate Car (BE):	Yes		

Options

Radio CD	Central consol F	
Windows electric F	Luggage cover	
Windows electric R	Front parking sensors	
Cruise Control	Rear parking sensors	
Steering wheel multifunctional	Type of Tow bar	Tow bar removable
Seats F heated		
Radio multimedia		
Type of headlighting	Headlighting Halogen	
Type of GPS	GPS big screen color	
Type of Lining	Lining fabrics	
Type of climate control	Autom climate control	
Adaptive cruise control		

Limited Technical Inspection

Airco functioning	OK	Battery functioning	Yes
Tires wear profile	OK	Power steering	Yes
Idle position	OK	Sound engine	OK
Engine startingtime	OK	Clutch test	OK
Exhaust gass	OK	Wiper fluid level	OK
Handbrake	OK	Transmission	OK
		Lighting	OK
		Wiperblades	OK

Degree of wear

	195/65/15/91 H Steel			
Summer tyres:	Fr.L.	Michelin: 3 mm	Fr.R.	Michelin: 3 mm
	Re.L.	Michelin: 5 mm	Re.R.	Michelin: 5 mm

Assistance equipment

Repair kit	Yes	Compressor	Yes
------------	------------	------------	------------

Total cost ex VAT	1080,15
-------------------	----------------

Bumper R, Scratch(es), LI - Repair and paint (complete)	211,80
---	---------------



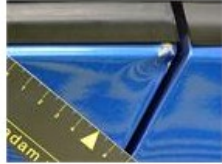
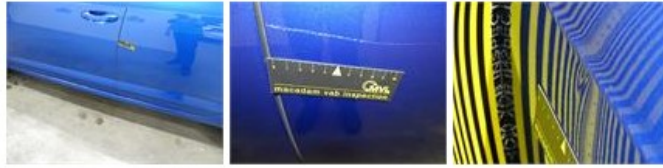
Wheel cover F R, Scratch(es), Acceptable 0,00

No pictures to display

Tailgate, Dent(s), Acceptable 0,00

No pictures to display

Door R L, Dent(s) and scratch(es), LI - Repair and paint (complete) 318,35



Front bumper, Scratch(es), LI - Repair and paint (complete) 211,80



Wheel cover R L, Missing, E - Replace 30,00



Wing R L, Scratch(es), LI - Repair and paint (complete) 308,20

