


**BMW 1 HATCH 116d : 1FGU432**

Vinnumber:	<b>WBA1C91070J513221</b>	Versionname:	<b>Eff.Dyn.Ed. 116PK</b>
First Registrationdate:	<b>25/06/2013</b>	Fiscalpower:	
Expertise Mileage:	<b>151960</b>	Power Kw:	<b>85</b>
Bodytype:		Body color	<b>Black</b>
Gearbox:	<b>MAN 6 VIT</b>	Paint type	<b>Metalic</b>
Transmission:	<b>Back</b>	Rims summer	<b>Steel</b>
Fueltype:	<b>Diesel</b>	Oil level	<b>OK</b>
Maintenance	<b>OK</b>	Parking lot	<b>2733</b>
Maintenance	<b>12-2021 38.000 KM</b>		
Battery functioning	<b>Yes</b>		
Number of doors	<b>5</b>		
Number of seats	<b>5</b>		
Number head rests	<b>5</b>		
Rims summer	<b>Steel</b>		
Category	<b>Passenger Car</b>		
Oil level	<b>OK</b>		
Registration Certificate Car (BE)	<b>No</b>		

**Options**

Radio CD		Central consol F
GPS storage	<b>HD</b>	Luggage cover
GPS storage		Rear parking sensors
Windows electric F		
Windows electric R		
Cruise Control		
Steering wheel multifunctional		
Radio multimedia		
Type of headlighting	<b>Headlighting Halogen</b>	
Type of GPS	<b>GPS big screen color</b>	
Type of Lining	<b>Lining fabrics</b>	
Type of climate control	<b>Autom climate control</b>	

**Limited Technical Inspection**

Airco functioning	<b>OK</b>	Battery functioning	<b>Yes</b>
Tires wear profile	<b>OK</b>	Power steering	<b>Yes</b>
Idle position	<b>OK</b>	Sound engine	<b>OK</b>
Engine startingtime	<b>OK</b>	Clutch test	<b>OK</b>
Exhaust gass	<b>OK</b>	Wiper fluid level	<b>OK</b>
Handbrake	<b>OK</b>	Transmission	<b>OK</b>
		Lighting	<b>OK</b>
		Wiperblades	<b>OK</b>

**Degree of wear**

	<b>205/55/16/91 W Steel</b>			
Summer tyres:	Fr.L.	<b>Michelin: 4 mm</b>	Fr.R.	<b>Michelin: 4 mm</b>
	Re.L.	<b>Michelin: 3 mm</b>	Re.R.	<b>Michelin: 3 mm</b>

**Assistance equipment**

Repair kit	<b>Yes</b>	Compressor	<b>Yes</b>
------------	------------	------------	------------

**Total cost ex VAT** 2573,78

**Bumper F, Dent(s) and scratch(es), LI - Repair and paint (complete)** 307,80




Wheel cover R R, Scratch(es), E - Replace 30,00



Door R L, Dent(s) and scratch(es), LI - Repair and paint (complete) 366,35



Door R R, Scratch(es), Acceptable 0,00



Brand badge, Missing, E - Replace 51,31



Bonnet, Chemical polution, LI - Repair and paint (complete) 290,08



Tailgate, Scratch(es), Acceptable 0,00



Roof pillar L, Chemical polution, LI - Repair and paint (complete) 220,18



Roof, Chemical polution, LI - Repair and paint (complete) 481,50



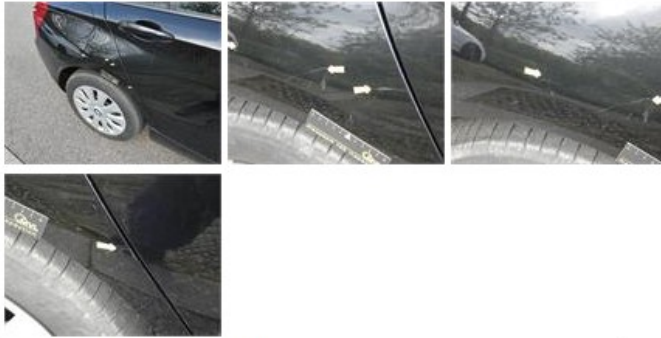
Wheel cover F L, Scratch(es), Acceptable 0,00



MOT Certificate, Extra mileage, P - Check 0,00



Wing R R, Scratch(es), LI - Repair and paint (complete) 308,20



Bonnet, Hail damage, PDR - Hail 0,00



Wheel cover F R, Scratch(es), E - Replace 30,00



Bumper R, Dent(s), Acceptable 0,00



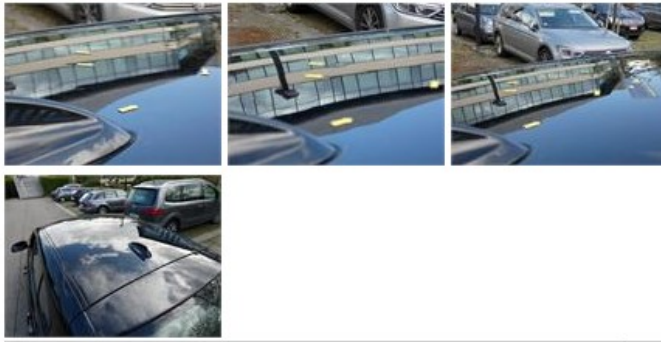
Wing F L, Dent(s) and scratch(es), LI - Repair and paint (complete) 268,18



Roof, Hail damage, PDR - Hail 0,00

Roof, nail damage, PDK - nail

0,00



Windscreen, Stone chip(s), Windscreen repair

0,00



Roof pillar R, Chemical polution, LI - Repair and paint (complete)

220,18

