


FORD S Max: 1GWN842

Vinnnumber:	WF0SXXGBWSET50074	Versionname:	5-MAX Titanium Style DPF
First Registrationdate:	20/05/2014	Fiscalpower:	136PK
Expertise Mileage:	106820	Power Kw:	100
Bodytype:		Body color:	Brown
Gearbox:	MAN 6 VIT	Paint type:	Metalic
Transmission:	Front	Rims summer:	Aluminium
Fueltype:	Diesel	Oil level:	OK
Battery functioning:	Yes	Parking lot:	3712
Number of doors:	5		
Number of seats:	5		
Number head rests:	5		
Rims summer:	Aluminium		
Category:	Passenger Car		
Oil level:	OK		
Registration Certificate Car (BE):	Yes		

Options

Radio CD		Seats electric F L	
GPS storage	HD	Seats electric F R	
GPS storage		Central consol F	
Windows electric F		Luggage cover	
Windows electric R		Front parking sensors	
Cruise Control		Rear parking sensors	
Steering wheel multifunctional		Type of Tow bar	Tow bar removable
Type of headlighting	Headlighting Halogen		
Type of GPS	GPS big screen color		
Type of Lining	Lining leather		
Type of climate control	Autom climate control		

Limited Technical Inspection

Airco functioning	OK	Battery functioning	Yes
Tires wear profile	OK	Power steering	Yes
Idle position	OK	Sound engine	OK
Engine startingtime	OK	Clutch test	OK
Exhaust gass	OK	Wiper fluid level	OK
Handbrake	OK	Transmission	OK
		Lighting	OK
		Wiperblades	OK

Degree of wear

	225/50/17/98 W LightMetal			
Summer tyres:	Fr.L.	Uniroyal: 5 mm	Fr.R.	Uniroyal: 5 mm
	Re.L.	Michelin: 6 mm	Re.R.	Michelin: 6 mm

Assistance equipment

Repair kit	Yes	Compressor	Yes
------------	------------	------------	------------

Total cost ex VAT 2010,18

Bumper F, Dent(s) and scratch(es), LI - Repair and paint (complete) 254,16

Bumper R, Dent(s) and scratch(es), E - Replace
483,84



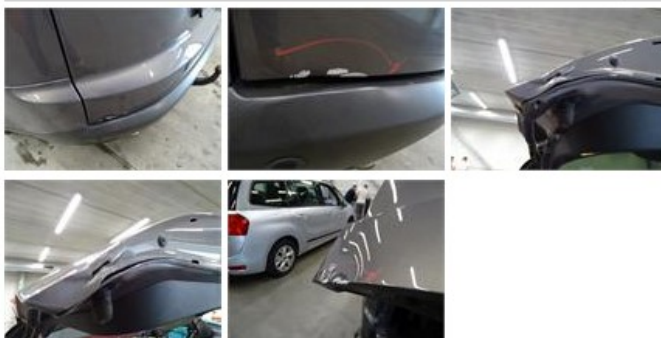
Alloy rim R R, Scratch(es), LI - Repair and paint (complete) 95,00



Alloy rim F L, Scratch(es), LI - Repair and paint (complete) 95,00



Molding trunk, Dent(s) and scratch(es), Le - Replace and paint 321,60



Sill outer R, Dent(s) and scratch(es), It - Spot repair 139,56



Alloy rim F R, Scratch(es), LI - Repair and paint (complete) 95,00



Door R R, Dent(s) and scratch(es), LI - Repair and paint (complete) 526,02

