



**LAND ROVER Evoque: MR6538**

Vinnumber:	<b>SALVA2BC1DH796716</b>	Versionname:	<b>EVOQUE TD4 4WD Dynamic 150PK Aut.</b>
First Registrationdate:	<b>28/08/2013</b>	Fiscalpower:	
Expertise Mileage:	<b>139174</b>	Power Kw:	<b>110</b>
Bodytype:	<b>SUV</b>	Body color:	<b>White</b>
Gearbox:	<b>Automatic</b>	Paint type:	<b>Metalic</b>
Transmission:		Rims summer:	<b>Aluminium</b>
Fueltype:	<b>Diesel</b>	Oil level:	<b>OK</b>
Battery functioning:	<b>Yes</b>	Parking lot:	<b>2729</b>
Number of doors:	<b>5</b>		
Number of seats:	<b>5</b>		
Number head rests:	<b>5</b>		
Rims summer:	<b>Aluminium</b>		
Category:	<b>Passenger Car</b>		
Oil level:	<b>OK</b>		

**Options**

Radio CD		Seats electric F L	
Windows electric F		Seats electric F R	
Windows electric R		Panoramic roof	
Steering wheel multifunctional		Central consol F	
Seats F heated		Luggage cover	
Radio multimedia		Front parking sensors	
Type of headlighting	<b>Headlighting Xenon</b>	Rear parking sensors	
Type of GPS	<b>GPS big screen color</b>	Type of Tow bar	<b>No Tow bar</b>
Type of Lining	<b>Lining leather</b>		
Type of climate control	<b>Autom climate control</b>		

**Limited Technical Inspection**

Airco functioning	<b>OK</b>	Battery functioning	<b>Yes</b>
Tires wear profile	<b>OK</b>	Power steering	<b>Yes</b>
Idle position	<b>OK</b>	Sound engine	<b>OK</b>
Engine startingtime	<b>OK</b>	Clutch test	<b>OK</b>
Exhaust gass	<b>OK</b>	Wiper fluid level	<b>OK</b>
Handbrake	<b>OK</b>	Transmission	<b>OK</b>
		Lighting	<b>OK</b>
		Wiperblades	<b>OK</b>

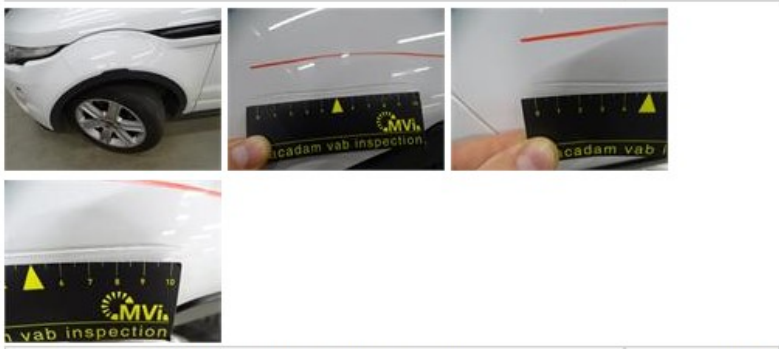
**Degree of wear**

	<b>235/55/19/105 V LightMetal</b>			
Summer tyres:	Fr.L.	<b>Goodyear: 5 mm</b>	Fr.R.	<b>Goodyear: 5 mm</b>
	Re.L.	<b>Goodyear: 8 mm</b>	Re.R.	<b>Goodyear: 8 mm</b>

**Assistance equipment**

Repair kit	<b>Yes</b>	Compressor	<b>Yes</b>
------------	------------	------------	------------

Total cost ex VAT	<b>3171,47</b>
Wing F L, Scratch(es), LI - Repair and paint (complete)	<b>264,21</b>

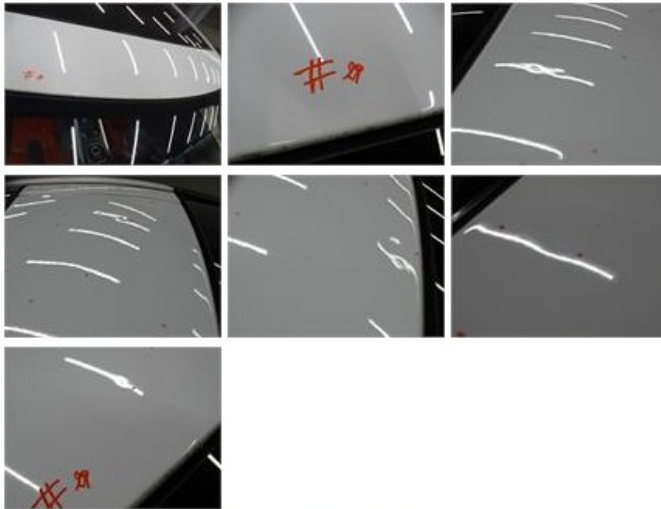


Wing R L, Scratch(es), LI - Repair and paint (complete)	<b>369,84</b>
---	---------------



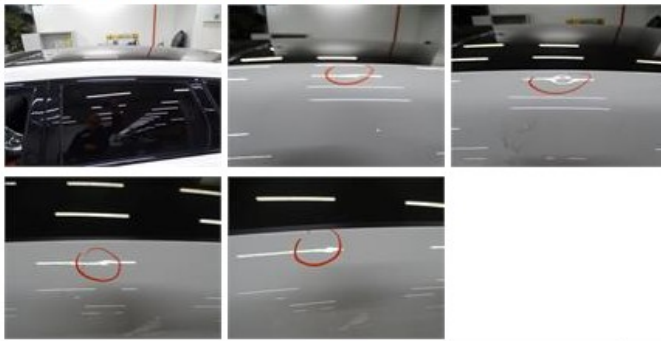
Roof, Hail damage, PDR - Hail

725,00



Roof pillar L, Dent(s), LI - Repair and paint (complete)

264,22



Door R L, Dent(s) and scratch(es), LI - Repair and paint (complete)

382,02



Alloy rim R L, Scratch(es), Acceptable

0,00

No pictures to display

Bumper R, Dent(s) and scratch(es), LI - Repair and paint (complete)

254,16



Tailgate, Scratch(es), LI - Repair and paint (complete)

362,02



Bonnet, Hail damage, PDR - Hail

550,00

