



MERCEDES CLA: 1PTD358			
Vinnumber:	WDD1173081N267382	Versionname:	CLA 200 d AMG Line
First Registrationdate:	12/09/2016	Fiscalpower:	
Expertise Mileage:	136910	Power Kw:	100
Bodytype:		Body color:	Silver
Gearbox:	MAN 6 VIT	Paint type:	Metalic
Transmission:		Rims summer:	Aluminium
Fueltype:	Diesel	Oil level:	OK
Battery functioning:	Yes	Parking lot:	2407
Number of doors:	4		
Number of seats:	5		
Number head rests:	5		
Rims summer:	Aluminium		
Category:	Passenger Car		
Oil level:	OK		
Registration Certificate Car (BE):	Yes		

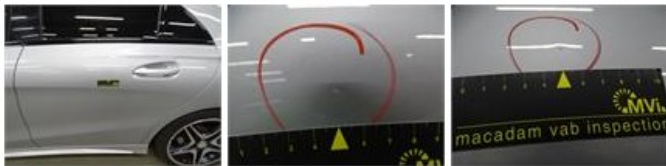
Options	
Radio CD	Seats electric F L
Windows electric F	Central consol F
Windows electric R	Front parking sensors
Cruise Control	Rear parking sensors
Steering wheel multifunctional	Type of Tow bar
Seats F heated	No Tow bar
Radio multimedia	
Type of headlighting	Headlighting Xenon
Type of GPS	GPS big screen color
Type of Lining	Lining leather and alcantara
Type of climate control	Autom climate control

Limited Technical Inspection			
Airco functioning	OK	Battery functioning	Yes
Tires wear profile	OK	Power steering	Yes
Idle position	OK	Sound engine	OK
Engine startingtime	OK	Clutch test	OK
Exhaust gass	OK	Wiper fluid level	OK
Handbrake	OK	Transmission	OK
		Lighting	OK
		Wiperblades	OK

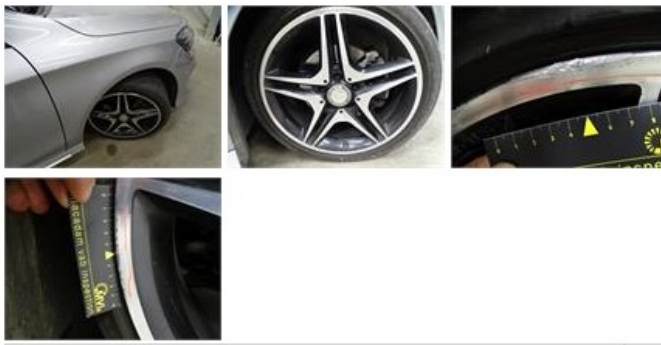
Degree of wear				
	225/4/18/92 Y LightMetal			
Summer tyres:	Fr.L.	Firestone: 3 mm	Fr.R.	Firestone: 3 mm
	Re.L.	Michelin: 7 mm	Re.R.	Michelin: 7 mm

Assistance equipment	
Repair kit	Yes
Compressor	Yes

Total cost ex VAT	1121,95
Door R L, Dent(s) and scratch(es), LI - Repair and paint (complete)	318,35



Alloy rim F R polished, Scratch(es), LI - Repair and paint (complete)	95,00
---	--------------



Alloy rim R L polished, Scratch(es), LI - Repair and paint (complete) 95,00



Bumper R, Scratch(es), LI - Repair and paint (complete) 211,80



Bumper F, Scratch(es), LI - Repair and paint (complete) 211,80



Alloy rim R R polished, Scratch(es), LI - Repair and paint (complete) 95,00



Alloy rim F L polished, Scratch(es), LI - Repair and paint (complete) 95,00

