


PEUGEOT 208: 1EMW224

Vinnnumber:	VF3CC8HR0CT124015	Versionname:	208 BER Active 68PK
First Registrationdate:	25/01/2013	Fiscalpower:	
Expertise Mileage:	163533	Power Kw:	50
Bodytype:	Hatchback	Body color	Silver
Gearbox:	MAN 5 VIT	Paint type	Metalic
Transmission:	Front	Rims summer	Steel
Fueltype:	Diesel	Oil level	OK
Battery functioning	Yes	Parking lot	2827
Number of doors	5		
Number of seats	5		
Number head rests	5		
Rims summer	Steel		
Category	Passenger Car		
Oil level	OK		

Options

Windows electric F	Luggage cover
Cruise Control	
Steering wheel multifunctional	
Radio multimedia	
Type of headlighting	Headlighting Halogen
Type of GPS	No GPS
Type of Lining	Lining fabrics
Type of climate control	Manual climate control

Limited Technical Inspection

Airco functioning	OK	Battery functioning	Yes
Tires wear profile	OK	Power steering	Yes
Idle position	OK	Sound engine	OK
Engine startingtime	OK	Clutch test	OK
Exhaust gass	OK	Wiper fluid level	OK
Handbrake	OK	Transmission	OK
		Lighting	OK
		Wiperblades	OK

Degree of wear

	185/65/15/88 H LightMetal			
Summer tyres:	Fr.L.	Continental: 4 mm	Fr.R.	Continental: 4 mm
	Re.L.	Continental: 5 mm	Re.R.	Continental: 5 mm

Assistance equipment

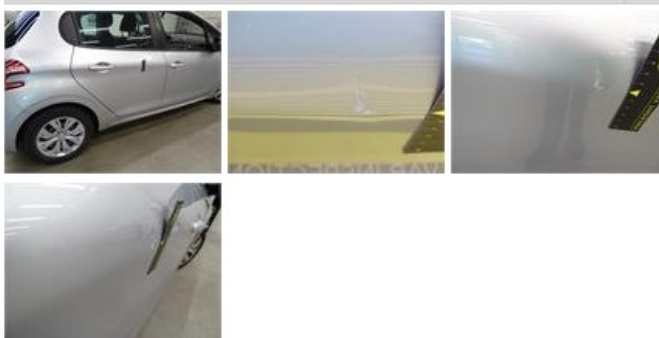
Spare wheel	Yes	Jack	Yes
-------------	------------	------	------------

Total cost ex VAT	293,08
-------------------	--------

Wing R L, Scratch(es), Acceptable	0,00
-----------------------------------	------

No pictures to display

Door R R, Dent(s) and scratch(es), LI - Repair and paint (complete)	254,68
---	--------



Wheel cover F R, Scratch(es), E - Replace	24,00
---	-------



Bumper R, Scratch(es), Acceptable	0,00
<i>No pictures to display</i>	
Roof, Dent(s), Acceptable	0,00
<i>No pictures to display</i>	
Tailgate, Dent(s), Acceptable	0,00
<i>No pictures to display</i>	
Rearview mirror glass L, Broken, E - Replace	14,40

