



VOLKSWAGEN Beetle: 1FKZ165

Vinnnumber:	WVWZZZ16ZDM687882	Versionname:	BEETLE Design BMT 105PK
First Registrationdate:	1/08/2013	Fiscalpower:	
Expertise Mileage:	103810	Power Kw:	77
Bodytype:		Body color:	White
Gearbox:	MAN 6 VIT	Paint type:	Metalic
Transmission:		Rims summer:	Aluminium
Fueltype:	Diesel	Oil level:	OK
Battery functioning:	Yes	Parking lot:	2402
Number of doors:	3		
Number of seats:	5		
Number head rests:	5		
Rims summer:	Aluminium		
Category:	Passenger Car		
Oil level:	OK		

Options

Radio CD		Sun Roof electric	
Windows electric F		Central consol F	
Cruise Control		Luggage cover	
Steering wheel multifunctional		Front parking sensors	
Type of headlighting	Headlighting Halogen	Rear parking sensors	
Type of GPS	GPS big screen color	Type of Tow bar	No Tow bar
Type of Lining	Lining fabrics		
Type of climate control	Autom climate control		

Limited Technical Inspection

Airco functioning	OK	Battery functioning	Yes
Tires wear profile	OK	Power steering	Yes
Idle position	OK	Sound engine	OK
Engine startingtime	OK	Clutch test	OK
Exhaust gass	OK	Wiper fluid level	OK
Handbrake	OK	Transmission	OK
		Lighting	OK
		Wiperblades	OK

Degree of wear

	215/60/16/99 H LightMetal			
Summer tyres:	Fr.L.	Goodyear: 4 mm	Fr.R.	Goodyear: 4 mm
	Re.L.	Bridgestone: 4 mm	Re.R.	Bridgestone: 4 mm

Assistance equipment

Emergency spare wheel	Yes	Jack	Yes
-----------------------	------------	------	------------

Total cost ex VAT	1720,60
--------------------------	----------------

Windscreen, Stone chip(s), Acceptable	0,00
--	-------------

No pictures to display

Bumper F, Scratch(es), LI - Repair and paint (complete)	211,80
--	---------------



Sill outer R, Dent(s) and scratch(es), LI - Repair and paint (complete)	310,50
--	---------------



Bumper R, Dent(s) and scratch(es), LI - Repair and paint (complete) 211,80



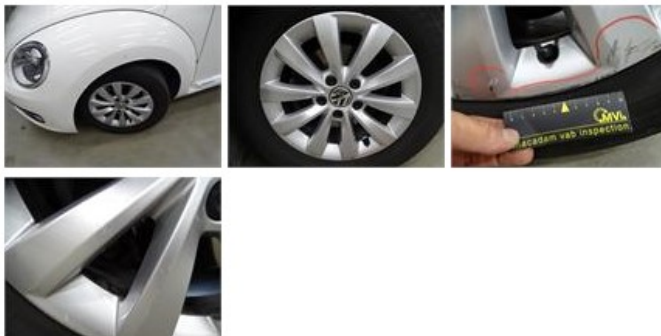
Wing R R, Dent(s) and scratch(es), LI - Repair and paint (complete) 308,20



Alloy rim R R, Scratch(es), Acceptable 0,00

No pictures to display

Alloy rim F L, Scratch(es), LI - Repair and paint (complete) 95,00



Bonnet, Stone chip(s), Acceptable 0,00

No pictures to display

Sill outer L, Dent(s) and scratch(es), LI - Repair and paint (complete) 310,50



Alloy rim F R, Scratch(es), LI - Repair and paint (complete) 95,00



Ignition key, Missing, E - Replace 0,00

No pictures to display

Wing R L, Dent(s), PDR - Knock out without painting 82,80



Alloy rim R L, Scratch(es), LI - Repair and paint (complete)

95,00

