



VOLKSWAGEN GOLF VARIANT: 1LDA049

Vinnumber:	WVWZZZAUZGP532783	Versionname:	1.6 TDI 81KW TRENDLINE
First Registrationdate:	25/08/2015	Fiscalpower:	
Expertise Mileage:	111629	Power Kw:	81
Bodytype:	Break	Body color:	Black
Gearbox:	MAN 5 VIT	Paint type:	Metalic
Transmission:	Front	Rims summer:	Steel
Fueltype:	Diesel	Oil level:	OK
Maintenance:	OK	Parking lot:	4705
Battery functioning:	Yes		
Number of doors:	5		
Number of seats:	5		
Number head rests:	5		
Rims summer:	Steel		
Category:	Passenger Car		
Oil level:	OK		
Registration Certificate Car (BE):	Yes		

Options

Radio CD		Central consol F	
GPS storage		Luggage cover	
GPS storage	SD	Rear parking sensors	
Windows electric F		Type of Tow bar	No Tow bar
Windows electric R			
Cruise Control			
Steering wheel multifunctional			
Radio multimedia			
Type of headlighting	Headlighting Halogen		
Type of GPS	GPS big screen color		
Type of Lining	Lining fabrics		
Type of climate control	Autom climate control		
Adaptive cruise control			

Limited Technical Inspection

Airco functioning	OK	Battery functioning	Yes
Tires wear profile	OK	Power steering	Yes
Idle position	OK	Sound engine	OK
Engine startingtime	OK	Clutch test	OK
Exhaust gass	OK	Wiper fluid level	OK
Handbrake	OK	Transmission	OK
		Lighting	OK
		Wiperblades	OK

Degree of wear

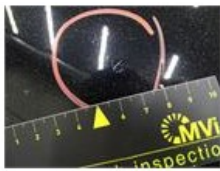
	195/65/15/91 H Steel			
Summer tyres:	Fr.L.	Bridgestone: 3 mm	Fr.R.	Bridgestone: 3 mm
	Re.L.	Michelin: 4 mm	Re.R.	Michelin: 4 mm

Assistance equipment

Emergency spare wheel	Yes	Jack	Yes
-----------------------	------------	------	------------

Total cost ex VAT	374,08
Bonnet, Bad repair, LI - Repair and paint (complete)	290,08





Door R L, Scratch(es), Acceptable	0,00
<i>No pictures to display</i>	
Bumper R, Scratch(es), Acceptable	0,00
<i>No pictures to display</i>	
Wing R L, Dent(s) and scratch(es), Acceptable	0,00
<i>No pictures to display</i>	
Door F R, Scratch(es), Acceptable	0,00
<i>No pictures to display</i>	
Interior, Dirty, Acceptable	0,00
<i>No pictures to display</i>	
Wing R R, Bad repair, LI - Repair and paint (partial)	0,00



Trunk lid covering R, Scratch(es), E - Replace	84,00
--	-------

