


**VOLKSWAGEN Golf: 1HCS254**

Vinnnumber:	<b>WVWZZZAUZEP583554</b>	Versionname:	<b>GOLF VAR Trendline 105PK</b>
First Registrationdate:	<b>19/06/2014</b>	Fiscalpower:	
Expertise Mileage:	<b>96387</b>	Power Kw:	<b>77</b>
Bodytype:		Body color:	<b>Dark Grey</b>
Gearbox:	<b>MAN 5 VIT</b>	Paint type:	<b>Metalic</b>
Transmission:	<b>Front</b>	Rims summer:	<b>Steel</b>
Fueltype:	<b>Diesel</b>	Oil level:	<b>OK</b>
Battery functioning:	<b>Yes</b>		
Number of doors:	<b>5</b>		
Number of seats:	<b>5</b>		
Number head rests:	<b>5</b>		
Rims summer:	<b>Steel</b>		
Category:	<b>Passenger Car</b>		
Oil level:	<b>OK</b>		
Registration Certificate Car (BE):	<b>Yes</b>		

**Options**

GPS storage	<b>SD</b>	Central consol F
GPS storage		Luggage cover
Windows electric F		Front parking sensors
Windows electric R		Rear parking sensors
Cruise Control		
Steering wheel multifunctional		
Radio multimedia		
Type of headlighting	<b>Headlighting Halogen</b>	
Type of GPS	<b>GPS big screen color</b>	
Type of Lining	<b>Lining fabrics</b>	
Type of climate control	<b>Autom climate control</b>	
Adaptive cruise control		

**Limited Technical Inspection**

Airco functioning	<b>OK</b>	Battery functioning	<b>Yes</b>
Tires wear profile	<b>OK</b>	Power steering	<b>Yes</b>
Idle position	<b>OK</b>	Sound engine	<b>OK</b>
Engine startingtime	<b>OK</b>	Clutch test	<b>OK</b>
Exhaust gass	<b>OK</b>	Wiper fluid level	<b>OK</b>
Handbrake	<b>OK</b>	Transmission	<b>OK</b>
		Lighting	<b>OK</b>
		Wiperblades	<b>OK</b>

**Degree of wear**

	<b>195/65/15/91 T Steel</b>			
Winter tyres:	Fr.L.	<b>Pirelli: 4 mm</b>	Fr.R.	<b>Pirelli: 2 mm</b>
	Re.L.	<b>Pirelli: 4 mm</b>	Re.R.	<b>Pirelli: 6 mm</b>

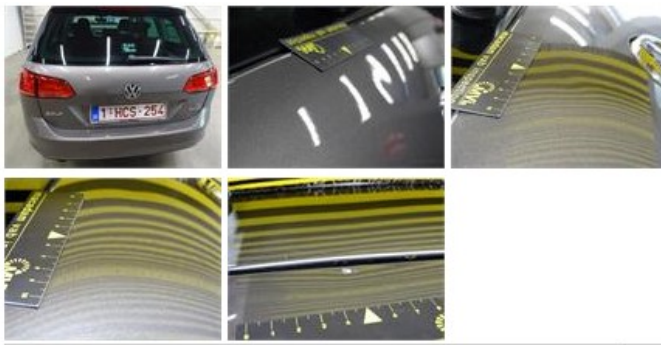
**Assistance equipment**

Emergency spare wheel	<b>Yes</b>	Jack	<b>Yes</b>
-----------------------	------------	------	------------

Total cost ex VAT	1254,48
Bumper spoiler F, Deformed / Strained, E - Replace	42,00



Tailgate, Dent(s) and scratch(es), LI - Repair and paint (complete)	301,68
---	--------



Windscreen, Stone chip(s), E - Replace	487,20
--	--------



Wing R L, Dent(s), Acceptable	0,00
-------------------------------	------

No pictures to display

Bumper F, Dent(s) and scratch(es), LI - Repair and paint (complete)	211,80
---	--------



Bumper R, Scratch(es), LI - Repair and paint (complete)	211,80
---	--------



Wheel cover F R, Scratch(es), Acceptable	0,00
--	------

No pictures to display

Door R R, Scratch(es), Acceptable	0,00
-----------------------------------	------

No pictures to display

Central pillar L, Dent(s) and scratch(es), Acceptable	0,00
---	------

No pictures to display