



## VOLVO XC60: 1KEJ236

Vinnnumber:	<b>YV1DZ31A1F2752547</b>	Versionname:	<b>2.0 D3 2WD VOLVO OCEAN RACE</b>
First Registrationdate:	<b>14/04/2015</b>	Fiscalpower:	
Expertise Mileage:	<b>166132</b>	Power Kw:	<b>100</b>
Bodytype:	<b>SUV</b>	Body color:	<b>Black</b>
Gearbox:	<b>MAN 6 VIT</b>	Paint type:	<b>Metalic</b>
Transmission:	<b>Front</b>	Rims summer:	<b>Aluminium</b>
Fueltype:	<b>Diesel</b>	Oil level:	<b>OK</b>
Battery functioning:	<b>Yes</b>	Parking lot:	<b>1229</b>
Number of doors:	<b>5</b>		
Number of seats:	<b>5</b>		
Number head rests:	<b>5</b>		
Rims summer:	<b>Aluminium</b>		
Category:	<b>Passenger Car</b>		
Oil level:	<b>OK</b>		
Registration Certificate Car (BE):	<b>Yes</b>		

## Options

Radio CD	Central consol F	
Windows electric F	Luggage cover	
Windows electric R	Rear parking sensors	
Cruise Control	Type of Tow bar	<b>Tow bar fixed</b>
Steering wheel multifunctional		
Radio multimedia		
Type of headlighting	<b>Headlighting Halogen</b>	
Type of GPS	<b>GPS big screen color</b>	
Type of Lining	<b>Lining leather</b>	
Type of climate control	<b>Autom climate control</b>	

## Limited Technical Inspection

Airco functioning	<b>OK</b>	Battery functioning	<b>Yes</b>
Tires wear profile	<b>OK</b>	Power steering	<b>Yes</b>
Idle position	<b>OK</b>	Sound engine	<b>OK</b>
Engine startingtime	<b>OK</b>	Clutch test	<b>OK</b>
Exhaust gass	<b>OK</b>	Wiper fluid level	<b>OK</b>
Handbrake	<b>OK</b>	Transmission	<b>OK</b>
		Lighting	<b>OK</b>
		Wiperblades	<b>OK</b>

## Degree of wear

	<b>235/60/18/103 V LightMetal</b>			
Summer tyres:	Fr.L.	<b>Pirelli: 3 mm</b>	Fr.R.	<b>Pirelli: 3 mm</b>
	Re.L.	<b>Pirelli: 5 mm</b>	Re.R.	<b>Pirelli: 5 mm</b>

## Assistance equipment

Emergency spare wheel	<b>Yes</b>	Jack	<b>Yes</b>
-----------------------	------------	------	------------

Total cost ex VAT	211,80
-------------------	--------

Door F L, Scratch(es), Acceptable	0,00
-----------------------------------	------

*No pictures to display*

Bumper F, Scratch(es), Acceptable	0,00
-----------------------------------	------

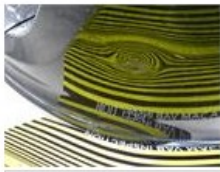
*No pictures to display*

Wing R R, Dent(s) and scratch(es), Acceptable	0,00
---	------

*No pictures to display*

Bumper R, Dent(s) and scratch(es), LI - Repair and paint (complete)	211,80
---	--------





Door R R, Scratch(es), Acceptable	0,00
<i>No pictures to display</i>	
Alloy rim F R polished, Scratch(es), Acceptable	0,00
<i>No pictures to display</i>	
Rear window, Scratch(es), Acceptable	0,00
<i>No pictures to display</i>	