



MERCEDES C BERLINE: XT6691

| | | | |
|-------------------------|--------------------------|--------------|-------------------------------------|
| Vinnumber: | WDD2050041F091666 | Versionname: | 2.1 C 220 D 125KW AVANTGARDE |
| First Registrationdate: | 11/09/2014 | Fiscalpower: | |
| Expertise Mileage: | 47825 | Power Kw: | 125 |
| Bodytype: | | Body color | Silver |
| Gearbox: | MAN 6 VIT | Paint type | Metalic |
| Transmission: | | Rims summer | Aluminium |
| Fueltype: | Diesel | Oil level | OK |
| Battery functioning | Yes | Parking lot | 2713 |
| Number of doors | 4 | | |
| Number of seats | 5 | | |
| Number head rests | 5 | | |
| Rims summer | Aluminium | | |
| Category | Passenger Car | | |
| Oil level | OK | | |

Options

| | |
|--------------------------------|------------------------------|
| Radio CD | Central consol F |
| Windows electric F | Front parking sensors |
| Windows electric R | Rear parking sensors |
| Cruise Control | Type of Tow bar |
| Steering wheel multifunctional | No Tow bar |
| Seats F heated | |
| Radio multimedia | |
| Type of headlighting | Headlighting Halogen |
| Type of GPS | GPS big screen color |
| Type of Lining | Lining semi-leather |
| Type of climate control | Autom climate control |

Limited Technical Inspection

| | | | |
|---------------------|-----------|---------------------|------------|
| Airco functioning | OK | Battery functioning | Yes |
| Tires wear profile | OK | Power steering | Yes |
| Idle position | OK | Sound engine | OK |
| Engine startingtime | OK | Clutch test | OK |
| Exhaust gass | OK | Wiper fluid level | OK |
| Handbrake | OK | Transmission | OK |
| | | Lighting | OK |
| | | Wiperblades | OK |

Degree of wear

| | | | | |
|---------------|----------------------------------|--------------------------|-------|--------------------------|
| | 225/50/17/94 W LightMetal | | | |
| Summer tyres: | Fr.L. | Continental: 4 mm | Fr.R. | Continental: 4 mm |
| | Re.L. | Michelin: 6 mm | Re.R. | Michelin: 6 mm |

Assistance equipment

| | | | |
|------------|------------|------------|------------|
| Repair kit | Yes | Compressor | Yes |
|------------|------------|------------|------------|

| | |
|-------------------|--------|
| Total cost ex VAT | 308,20 |
|-------------------|--------|

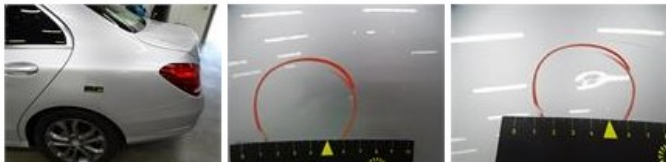
| | |
|--|------|
| Alloy rim F R, Scratch(es), Acceptable | 0,00 |
|--|------|

No pictures to display

| | |
|-----------------------------------|------|
| Bumper R, Scratch(es), Acceptable | 0,00 |
|-----------------------------------|------|

No pictures to display

| | |
|---|--------|
| Wing R L, Dent(s) and scratch(es), LI - Repair and paint (complete) | 308,20 |
|---|--------|



| | |
|---------------------------------------|------|
| Windscreen, Stone chip(s), Acceptable | 0,00 |
|---------------------------------------|------|

