


BMW 3: 1HHR483

| | | | |
|------------------------------------|--------------------------|--------------|-----------------------------|
| Vinnumber: | WBA3K11040F828896 | Versionname: | 3 TOURING 318d 136PK |
| First Registrationdate: | 2/12/2013 | Fiscalpower: | |
| Expertise Mileage: | 110252 | Power Kw: | 100 |
| Bodytype: | | Body color: | Black |
| Gearbox: | MAN 6 VIT | Paint type: | Metalic |
| Transmission: | Back | Rims summer: | Aluminium |
| Fueltype: | Diesel | Oil level: | OK |
| Maintenance: | OK | Parking lot: | 3723 |
| Maintenance: | IN 60000KM | | |
| Battery functioning: | Yes | | |
| Number of doors: | 5 | | |
| Number of seats: | 5 | | |
| Number head rests: | 5 | | |
| Rims summer: | Aluminium | | |
| Category: | Passenger Car | | |
| Oil level: | OK | | |
| Registration Certificate Car (BE): | Yes | | |

Options

| | | | |
|--------------------------------|------------------------------|----------------------|-------------------|
| Radio CD | | Central consol F | |
| GPS storage | HD | Luggage cover | |
| GPS storage | | Rear parking sensors | |
| Windows electric F | | Type of Tow bar | No Tow bar |
| Windows electric R | | | |
| Cruise Control | | | |
| Steering wheel multifunctional | | | |
| Type of headlighting | Headlighting Halogen | | |
| Type of GPS | GPS big screen color | | |
| Type of Lining | Lining fabrics | | |
| Type of climate control | Autom climate control | | |

Limited Technical Inspection

| | | | |
|---------------------|-----------|---------------------|------------|
| Airco functioning | OK | Battery functioning | Yes |
| Tires wear profile | OK | Power steering | Yes |
| Idle position | OK | Sound engine | OK |
| Engine startingtime | OK | Clutch test | OK |
| Exhaust gass | OK | Wiper fluid level | OK |
| Handbrake | OK | Transmission | OK |
| | | Lighting | OK |
| | | Wiperblades | OK |

Degree of wear

| | | | | |
|---------------|----------------------------------|-----------------------|-------|-----------------------|
| | 205/60/16/92 W LightMetal | | | |
| Summer tyres: | Fr.L. | Michelin: 5 mm | Fr.R. | Michelin: 5 mm |
| | Re.L. | Michelin: 5 mm | Re.R. | Michelin: 5 mm |

Assistance equipment

| | | | |
|------------|------------|------------|------------|
| Repair kit | Yes | Compressor | Yes |
|------------|------------|------------|------------|

| | |
|-------------------|---------|
| Total cost ex VAT | 1540,56 |
|-------------------|---------|

| | |
|---|--------|
| Roof, Chemical polution, LI - Repair and paint (complete) | 481,50 |
|---|--------|



| | |
|-------------------------------|------|
| Wing F L, Dent(s), Acceptable | 0,00 |
|-------------------------------|------|

No pictures to display

| | |
|---|--------|
| Door R L, Chemical polution, LI - Repair and paint (complete) | 318,35 |
|---|--------|



Alloy rim R R, Scratch(es), LI - Repair and paint (complete)

95,00



Bumper R, Scratch(es), LI - Repair and paint (complete)

211,80



Wing R L, Dent(s), Acceptable

0,00

No pictures to display

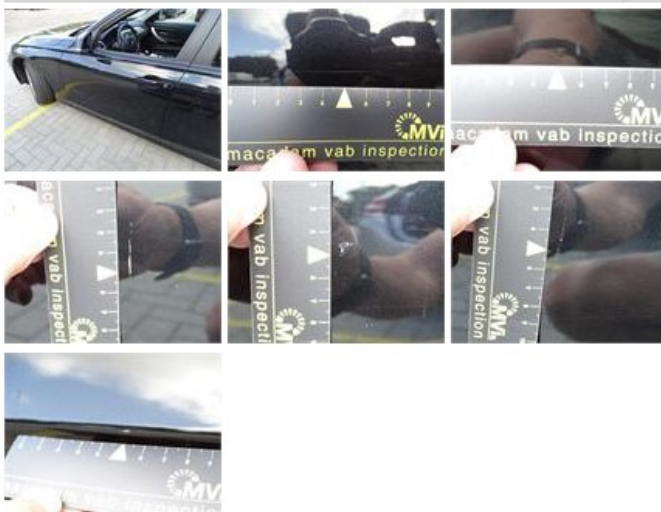
Door frame R R, Scratch(es), It - Spot repair

115,56



Door F L, Scratch(es), LI - Repair and paint (complete)

318,35



Alloy rim F L, Scratch(es), Acceptable

0,00

No pictures to display

Wing R R, Scratch(es), Acceptable

0,00

No pictures to display