


**BMW 5: 1HDG510**

Vinnumber:	<b>WBA5C11040D035762</b>	Versionname:	<b>5 BER 518d 136PK</b>
First Registrationdate:	<b>24/06/2014</b>	Fiscalpower:	
Expertise Mileage:	<b>120664</b>	Power Kw:	<b>100</b>
Bodytype:		Body color:	<b>Black</b>
Gearbox:	<b>MAN 6 VIT</b>	Paint type:	<b>Metalic</b>
Transmission:	<b>Back</b>	Rims summer:	<b>Aluminium</b>
Fueltype:	<b>Diesel</b>	Oil level:	<b>OK</b>
Maintenance:	<b>IN 600 KM</b>	Parking lot:	<b>2523</b>
Maintenance:	<b>OK</b>		
Battery functioning:	<b>Yes</b>		
Number of doors:	<b>4</b>		
Number of seats:	<b>5</b>		
Number head rests:	<b>5</b>		
Rims summer:	<b>Aluminium</b>		
Category:	<b>Passenger Car</b>		
Oil level:	<b>OK</b>		
Registration Certificate Car (BE):	<b>Yes</b>		

**Options**

Radio CD		Central consol F	
GPS storage		Luggage cover	
GPS storage	<b>HD</b>	Front parking sensors	
Windows electric F		Rear parking sensors	
Windows electric R		Type of Tow bar	<b>No Tow bar</b>
Cruise Control			
Steering wheel multifunctional			
Seats F heated			
Type of headlighting	<b>Headlighting Xenon</b>		
Type of GPS	<b>GPS big screen color</b>		
Type of Lining	<b>Lining leather</b>		
Type of climate control	<b>Autom climate control</b>		

**Limited Technical Inspection**

Airco functioning	<b>OK</b>	Battery functioning	<b>Yes</b>
Tires wear profile	<b>OK</b>	Power steering	<b>Yes</b>
Idle position	<b>OK</b>	Sound engine	<b>OK</b>
Engine startingtime	<b>OK</b>	Clutch test	<b>OK</b>
Exhaust gass	<b>OK</b>	Wiper fluid level	<b>OK</b>
Handbrake	<b>OK</b>	Transmission	<b>OK</b>
		Lighting	<b>OK</b>
		Wiperblades	<b>OK</b>

**Degree of wear**

	<b>225/55/17/97 W LightMetal</b>			
Summer tyres:	Fr.L.	<b>Michelin: 7 mm</b>	Fr.R.	<b>Michelin: 7 mm</b>
	Re.L.	<b>Michelin: 6 mm</b>	Re.R.	<b>Michelin: 6 mm</b>

**Assistance equipment**

	Runflat	<b>Yes</b>
Total cost ex VAT		<b>1803,36</b>
Alloy rim F L, Scratch(es), Acceptable		<b>0,00</b>
<i>No pictures to display</i>		
Bonnet, Scratch(es), Acceptable		<b>0,00</b>
<i>No pictures to display</i>		
Alloy rim R L, Scratch(es), LI - Repair and paint (complete)		<b>95,00</b>

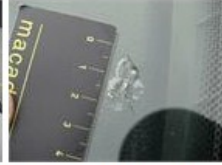




Alloy rim R R, Scratch(es), LI - Repair and paint (complete) 95,00



Windscreen, Stone chip(s), E - Replace 560,64



Rearview mirror housing L, Scratch(es), LI - Repair and paint (complete) 115,56



Alloy rim F R, Scratch(es), LI - Repair and paint (complete) 95,00



Bumper corner R L, Scratch(es), It - Spot repair 115,56



Door R L, Scratch(es), Acceptable 0,00

No pictures to display

Tailgate, Dent(s), Acceptable 0,00

No pictures to display

Roof, Dent(s), PDR - Knock out without painting 102,60



Wing F R, Scratch(es), Acceptable 0,00

No pictures to display

Door F L, Scratch(es), Acceptable 0,00

No pictures to display

Bumper F, Scratch(es), LI - Repair and paint (complete) 254,16



Wing R L, Scratch(es), LI - Repair and paint (complete) 369,84

